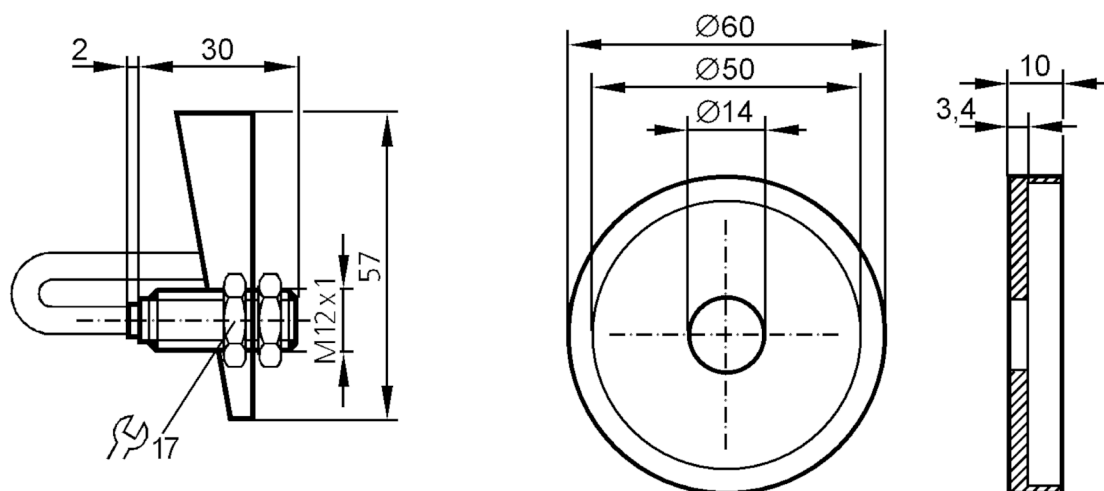


Inductive sensor

IF-04-N SS-L-L

Article no longer available - archive entry



Product characteristics

Output function		normally closed
Sensing range	[mm]	4
Housing		Threaded type
Dimensions	[mm]	M12 x 1

Application

Application		Not for use in hazardous areas (not ATEX approved!)
Installation		for valves; (76...101,6 (NW 80...100))

Electrical data

Connection at circuit amplifier		yes
Switching amplifiers		connection to switching amplifier according to EN 60947-5-6
Nominal voltage DC	[V]	8.2; (1k Ω)
Supply voltage DC	[V]	7.5...30
Current consumption	[mA]	undamped: > 2,1; damped: < 1
Protection class		III

Outputs

Output function		normally closed
Permanent current rating of switching output DC	[mA]	30
Switching frequency DC	[Hz]	1500

Monitoring range

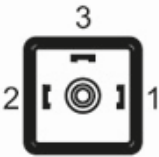
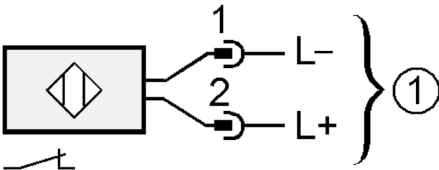
Sensing range	[mm]	4
---------------	------	---

IF7036



Inductive sensor

IF-04-N SS-L-L

Operating conditions		
Ambient temperature	[°C]	-20...70
Protection		IP 65
Tests / approvals		
EMC	EN 60947-5-2	
	EN 55011	class B
Mechanical data		
Weight	[g]	0.001
Housing		Threaded type
Mounting		non-flush mountable
Dimensions	[mm]	M12 x 1
Thread designation		M12 x 1
Material		PBT; Target: stainless steel (1.4301 / 304)
Accessories		
Items supplied		lock nuts: 2
		Target
Remarks		
Remarks	Note:	
	The sensors are adjusted with the enclosed target flag.	
	If an older type of target flag is used, there is a risk of mechanical damage to the sensor if they are not adjusted properly.	
Pack quantity		1 pcs.
Electrical connection - plug		
Connector: 1 x valve plug type A DIN (DIN EN 175301-803)		
<div></div>		
Connection		
<div></div>		
1 =	Connection at circuit amplifier	
1-2:	Low	