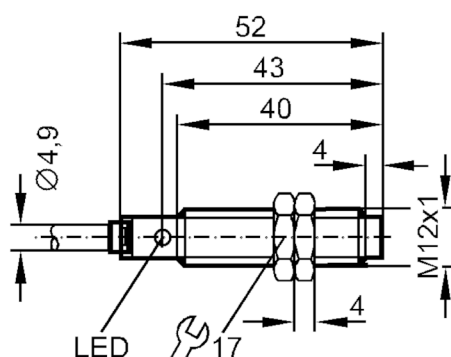




Inductive sensor

IFK33,5-BPKG/V4A/15m

Article no longer available - archive entry



Product characteristics

Electrical design	PNP
Output function	normally open
Sensing range [mm]	3.5
Housing	Threaded type
Dimensions [mm]	M12 x 1

Electrical data

Operating voltage [V]	10...36 DC
Current consumption [mA]	15; (24 V)
Protection class	II
Reverse polarity protection	yes

Outputs

Electrical design	PNP
Output function	normally open
Max. voltage drop switching output DC [V]	2.5
Permanent current rating of switching output DC [mA]	200
Switching frequency DC [Hz]	400
Short-circuit protection	yes
Type of short-circuit protection	yes (non-latching)
Overload protection	yes

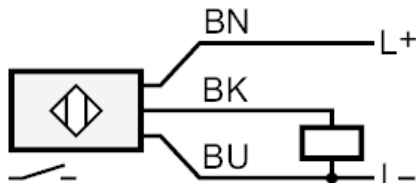
IF5858



Inductive sensor

IFK33,5-BPKG/V4A/15m

Monitoring range		
Sensing range	[mm]	3.5
Real sensing range Sr	[mm]	3.5 ± 10 %
Operating distance	[mm]	0...2.8
Accuracy / deviations		
Correction factor		steel: 1 / stainless steel: 0.7 / brass: 0.4 / aluminum: 0.3 / copper: 0.2
Hysteresis	[% of Sr]	1...15
Switch-point drift	[% of Sr]	-10...10
Operating conditions		
Ambient temperature	[°C]	-25...70
Protection		IP 67
Tests / approvals		
EMC	EN 60947-5-2	
Mechanical data		
Housing		Threaded type
Mounting		non-flush mountable
Dimensions	[mm]	M12 x 1
Thread designation		M12 x 1
Material		stainless steel (1.4571/316Ti); PBT
Displays / operating elements		
Display	Switching status	1 x LED, yellow
Accessories		
Items supplied		lock nuts: 2
Remarks		
Pack quantity		1 pcs.
Electrical connection		
Cable: 15 m, PVC; 3 x 0.34 mm²		
Connection		



	Core colors :
BK =	black
BN =	brown
BU =	blue