

ID5003



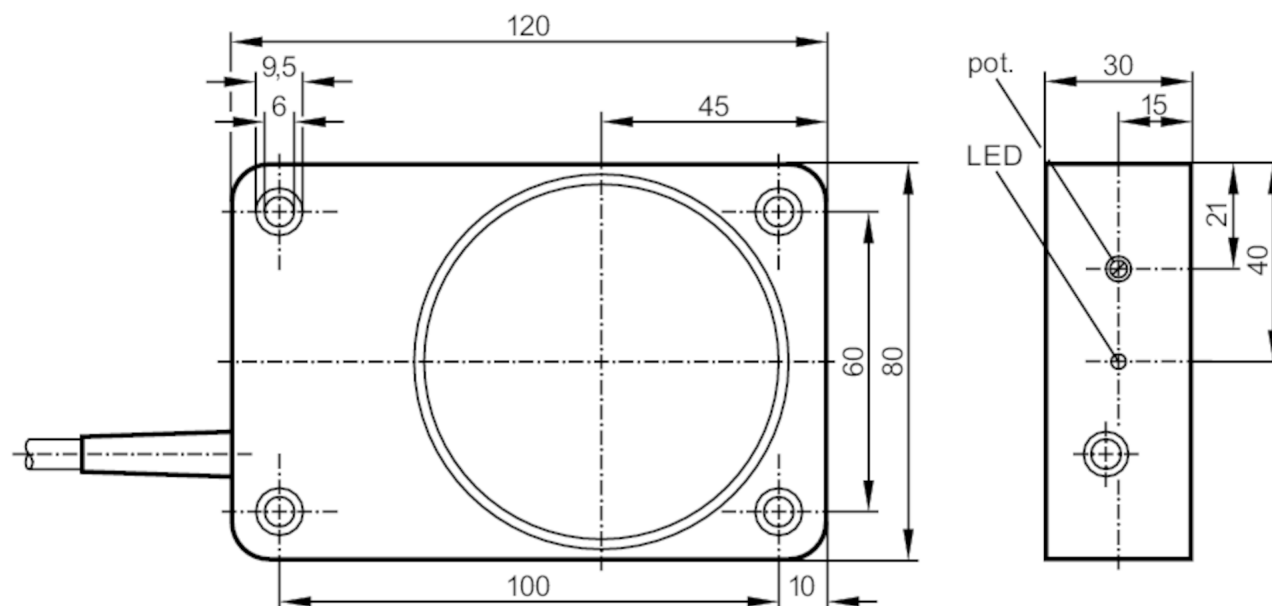
Inductive sensor

ID-3050-BNOG

Article no longer available - archive entry

Alternative articles: ID5023

When selecting an alternative article and accessories please note that technical data may differ!



Product characteristics

Electrical design	NPN
Output function	normally closed
Sensing range [mm]	50
Housing	rectangular
Dimensions [mm]	120 x 80 x 30

Electrical data

Operating voltage [V]	10...30 DC
Current consumption [mA]	7; (24 V)
Reverse polarity protection	no

Outputs

Electrical design	NPN
Output function	normally closed
Max. voltage drop switching output DC [V]	1
Permanent current rating of switching output DC [mA]	200
Switching frequency DC [Hz]	30
Short-circuit protection	no
Overload protection	no

Monitoring range

Sensing range [mm]	50
Sensing range adjustable	yes

ID5003



Inductive sensor

ID-3050-BNOG

Factory setting sensing range [mm]	50
Real sensing range Sr [mm]	50 ± 10 %
Operating distance [mm]	0...40.5

Accuracy / deviations

Correction factor	steel: 1 / stainless steel: 0.7 / brass: 0.4 / aluminum: 0.3 / copper: 0.2
Hysteresis [% of Sr]	1...15
Switch-point drift [% of Sr]	-10...10

Operating conditions

Ambient temperature [°C]	-10...50
Protection	IP 65

Tests / approvals

EMC	EN 60947-5-2	
	EN 55011	class B

Mechanical data

Housing	rectangular
Mounting	non-flush mountable
Dimensions [mm]	120 x 80 x 30
Material	PPE modified

Displays / operating elements

Display	Switching status	1 x LED, yellow
---------	------------------	-----------------

Accessories

Items supplied	screwdriver: 1
----------------	----------------

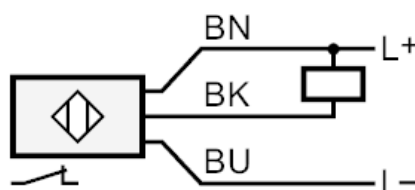
Remarks

Pack quantity	1 pcs.
---------------	--------

Electrical connection

Cable: 2 m, PVC; 3 x 0.5 mm²

Connection



Core colors :
BN = brown
BU = blue
BK = black