

IB0116



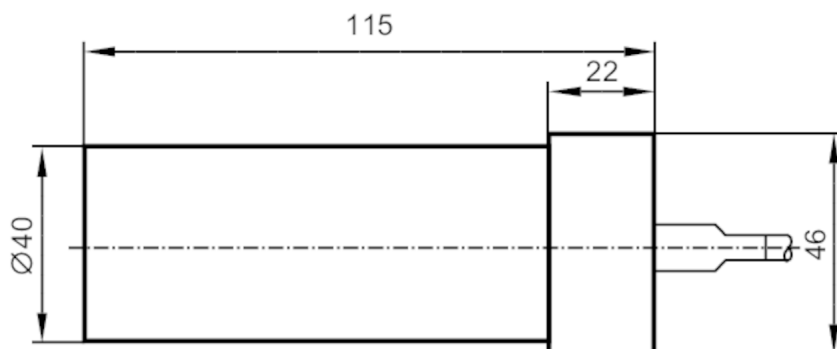
Inductive sensor

IB-2020ZBBOA/10M/KHI

Article no longer available - archive entry

Alternative articles: IB0111

When selecting an alternative article and accessories please note that technical data may differ!



Product characteristics

Output function		normally closed
Sensing range	[mm]	20
Housing		tubular
Dimensions	[mm]	Ø 40 / L = 115

Electrical data

Operating voltage	[V]	20...250 AC/DC
Protection class		II
Reverse polarity protection		no

Outputs

Output function		normally closed
Max. voltage drop switching output DC	[V]	6
Max. voltage drop switching output AC	[V]	6.5
Minimum load current	[mA]	5
Max. leakage current	[mA]	2.5 (250 V AC) / 1.3 (110 V AC) / 0.8 (24 V DC)
Permanent current rating of switching output AC	[mA]	100; (350 (...50 °C))
Permanent current rating of switching output DC	[mA]	100
Short-time current rating of switching output	[mA]	2200; (20 ms / 0,5 Hz)
Switching frequency AC	[Hz]	25
Switching frequency DC	[Hz]	50
Short-circuit proof		no
Overload protection		no

Monitoring range

Sensing range	[mm]	20
---------------	------	----

IB0116



Inductive sensor

IB-2020ZBBOA/10M/KHI

Real sensing range Sr	[mm]	20 ± 10 %
Operating distance	[mm]	0...16.2

Accuracy / deviations

Correction factor	steel: 1 / stainless steel: 0.7 / brass: 0.5 / aluminum: 0.5 / copper: 0.4	
Hysteresis	[% of Sr]	1...20
Switch-point drift	[% of Sr]	-10...10

Operating conditions

Ambient temperature	[°C]	-25...100
Protection		IP 67

Tests / approvals

EMC	EN 60947-5-2	
	EN 55011	class B

Mechanical data

Weight	[g]	0.001
Housing		tubular
Mounting		non-flush mountable
Dimensions	[mm]	Ø 40 / L = 115
Material		protective housing: MC Nylon; End cap: stainless steel; Mounting clamp: MC Nylon

Electrical connection

Required protection	miniature fuse to IEC60127-2 sheet 1; ≤ 2 A; fast acting
---------------------	--

Accessories

Items supplied	Mounting clamp: 1
----------------	-------------------

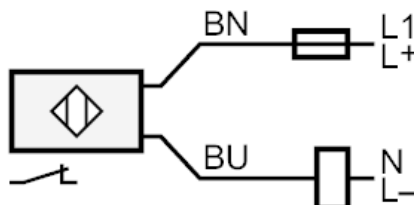
Remarks

Remarks	Recommendation: check the unit for reliable function after a short circuit.
Pack quantity	1 pcs.

Electrical connection

Cable: 10 m, silicone; 2 x 0.75 mm²

Connection



Note miniature fuse to IEC60127-2 sheet 1 ≤ 2 A fast acting

Core colors :

BN = brown
BU = blue