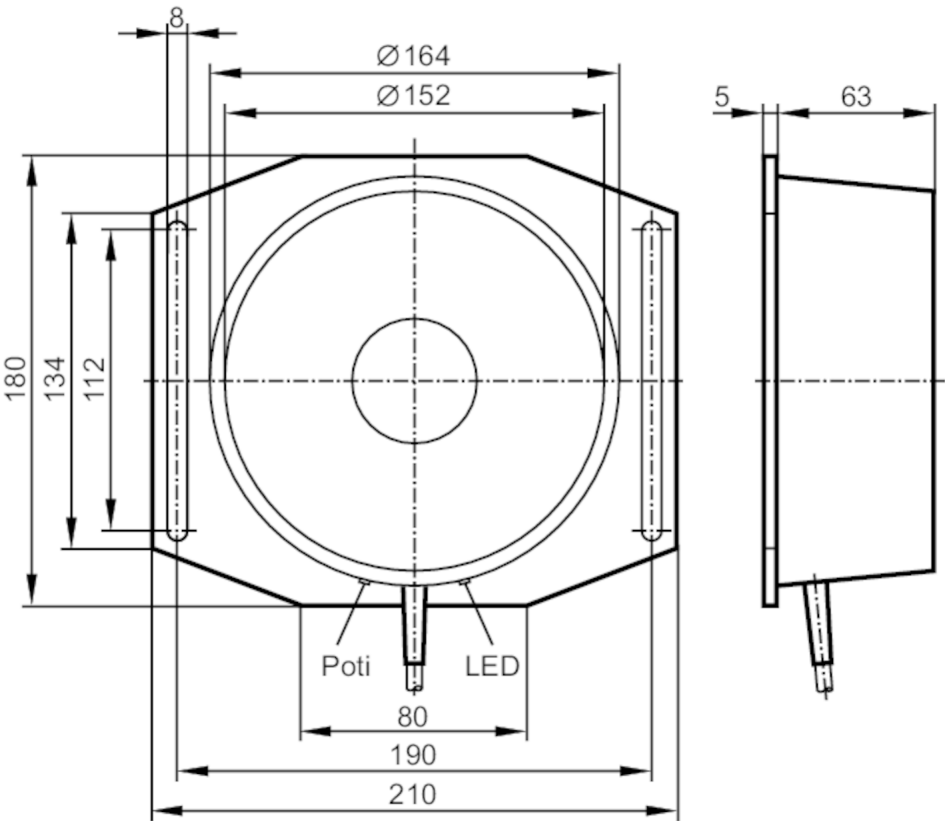




Inductive area sensor

SIY-3120-ANKG

Article no longer available - archive entry



Product characteristics		
Electrical design		NPN
Output function		normally open
Sensing range	[mm]	30...120
Housing		tubular
Dimensions	[mm]	Ø 164 / L = 68
Electrical data		
Operating voltage	[V]	12...36 DC
Current consumption	[mA]	< 7
Outputs		
Electrical design		NPN
Output function		normally open
Max. voltage drop switching output DC	[V]	2.5
Permanent current rating of switching output DC	[mA]	200
Switching frequency DC	[Hz]	3

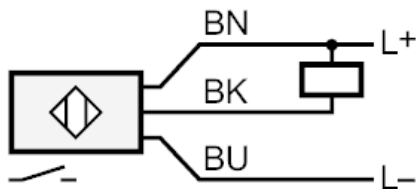
# I27004



## Inductive area sensor

SIY-3120-ANKG

Monitoring range		
Sensing range	[mm]	30...120
Sensing range adjustable		yes
Factory setting sensing range	[mm]	120
Real sensing range Sr	[mm]	(30...120)
Accuracy / deviations		
Correction factor		steel: 1 / stainless steel: 0.7 / brass: 0.4 / aluminum: 0.3 / copper: 0.2
Hysteresis	[% of Sr]	< 15
Switch-point drift	[% of Sr]	-15...15
Operating conditions		
Ambient temperature	[°C]	-20...70
Protection		IP 65
Tests / approvals		
EMC	EN 60947-5-2	
Mechanical data		
Housing		tubular
Mounting		non-flush mountable
Type of mounting		with mounting plate
Dimensions	[mm]	Ø 164 / L = 68
Material		housing: PBT; Mounting plate: aluminum anodized
Displays / operating elements		
Display	Switching status	1 x LED, yellow
Remarks		
Pack quantity		1 pcs.
Electrical connection		
Cable: 2 m, PVC; 3 x 0.5 mm²		
Connection		



	Core colors :
BK =	black
BN =	brown
BU =	blue