

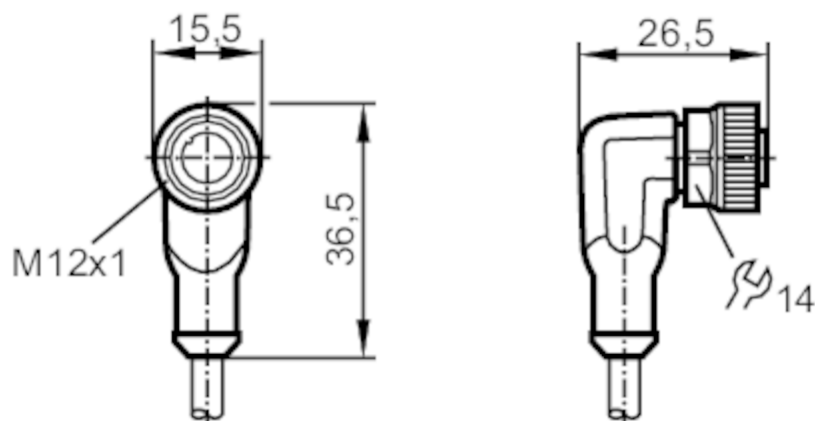
# EVC683



## Female cordset

ADOAH050MSA0010H05

Please see the technical note under "Downloads"



Application		
System		Free from silicone; Halogen-free; gold-plated contacts; Drag chain suitability
Application		CAN bus
Free from silicone		yes
Electrical data		
Operating voltage	[V]	32 DC; (wires 4+5: 5 V)
Protection class		II
Max. current load total	[A]	4; (wires 4+5: 0,05)
Operating conditions		
Ambient temperature	[°C]	-25...90
Ambient temperature (moving)	[°C]	-25...90
Protection		IP 65; IP 67; IP 68; IP 69K
Mechanical data		
Weight	[g]	360.3
Dimensions	[mm]	26.5 x 15.5 x 36.5
Material		housing: TPU (urethane) black; sealing: FKM
Material nut		brass, nickel-plated
Drag chain suitability		yes

# EVC683



## Female cordset

ADOAH050MSA0010H05

Drag chain suitability	Bending radius for flexible applications	min. 10 x cable diameter
	Travel speed	max. 3.3 m/s for a horizontal travel length of 5 m and max. acceleration of 5 m/s <sup>2</sup>
	Bending cycles	> 5 Mio.
	Torsional strain	± 180 °/m

### Remarks

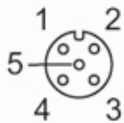
Remarks	The CAN bus terminating resistor (120 Ω) is integrated in the M12 connector.
Notes	Please see the technical note under "Downloads"
Pack quantity	1 pcs.

### Electrical connection

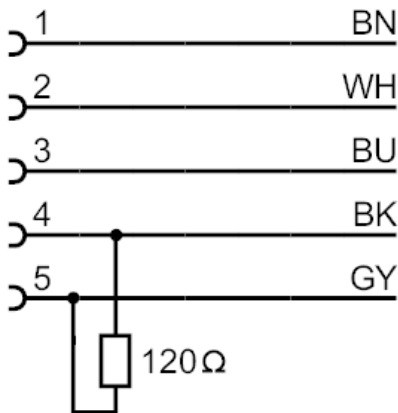
Cable: 10 m, PUR, Halogen-free, black, Ø 4.9 mm; 5 x 0.34 mm<sup>2</sup> (42 x Ø 0.1 mm )

### Electrical connection - Socket

Connector: 1 x M12, angled; coding: A; Locking: brass, nickel-plated; Contacts: gold-plated; Tightening torque: 0.6...1.5 Nm



### Connection



	Core colors :
BK =	black
BN =	brown
BU =	blue
GY =	grey
WH =	white