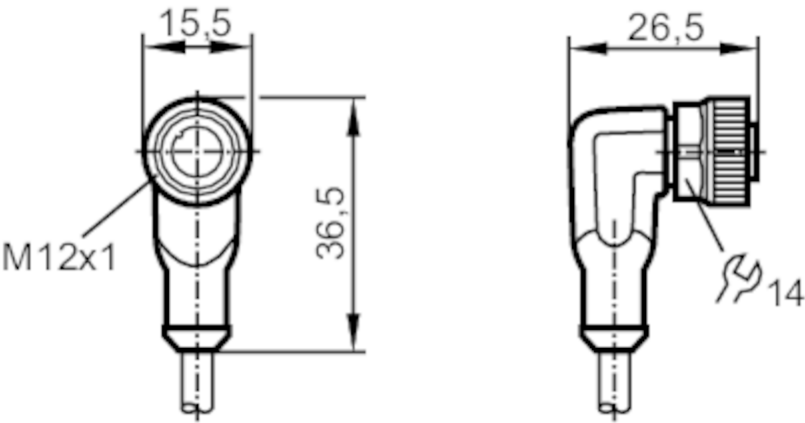


EVC541



Female cordset

ADOAH040MSS0002K04



Application		
System		Free from silicone; Halogen-free; gold-plated contacts; screened cable; Drag chain suitability
Free from silicone		yes
Electrical data		
Operating voltage	[V]	< 50 AC / < 60 DC
Protection class		III
Max. current load total	[A]	4
Operating conditions		
Ambient temperature	[°C]	-25...90
Note on ambient temperature		cULus: ...75 °C
Ambient temperature (moving)	[°C]	-25...90
Note on ambient temperature (moving)		cULus: ...75 °C
Protection		IP 65; IP 67
Mechanical data		
Weight	[g]	99.6
Dimensions	[mm]	26.5 x 15.5 x 36.5
Material		housing: TPU (urethane) orange; sealing: FKM
Material nut		brass, nickel-plated
Drag chain suitability		yes

EVC541



Female cordset

ADOAH040MSS0002K04

Drag chain suitability	Bending radius for flexible applications	min. 10 x cable diameter
	Travel speed	max. 3.3 m/s for a horizontal travel length of 5 m and max. acceleration of 5 m/s ²
	Bending cycles	≥ 2 Mio.
	Torsional strain	± 180 °/m

Remarks

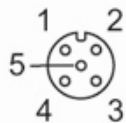
Pack quantity	1 pcs.
---------------	--------

Electrical connection

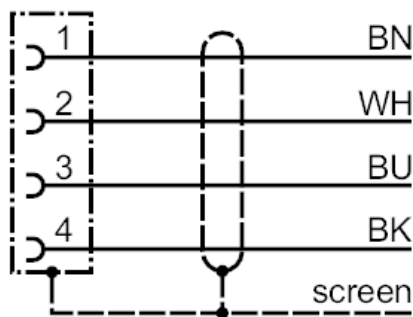
Cable: 2 m, PUR, Halogen-free, black, Ø 4.9 mm, screened; 4 x 0.34 mm² (42 x Ø 0.1 mm)

Electrical connection - Socket

Connector: 1 x M12, angled; coding: A; Locking: brass, nickel-plated; Contacts: gold-plated; Tightening torque: 0.6...1.5 Nm;
Shielded connection cable: shield connected



Connection



	Core colors :
BK =	black
BN =	brown
BU =	blue
WH =	white

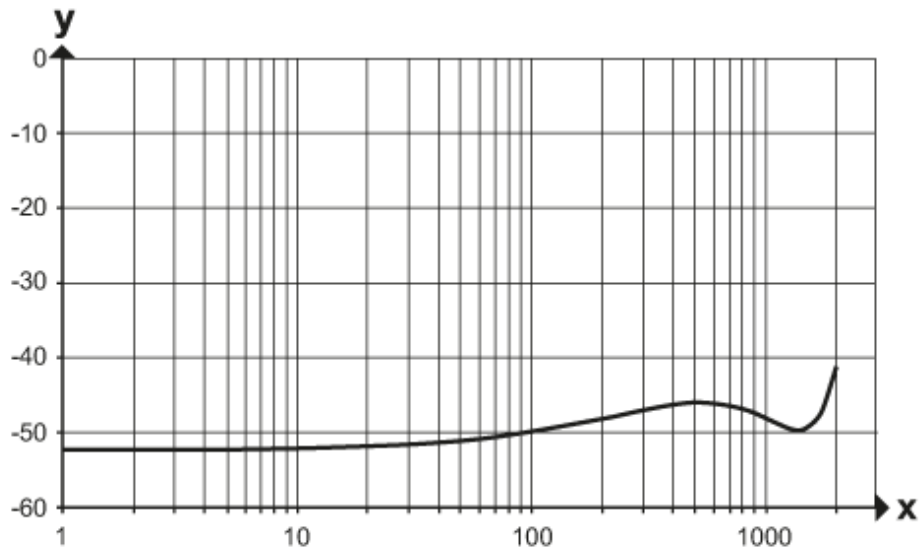


Female cordset

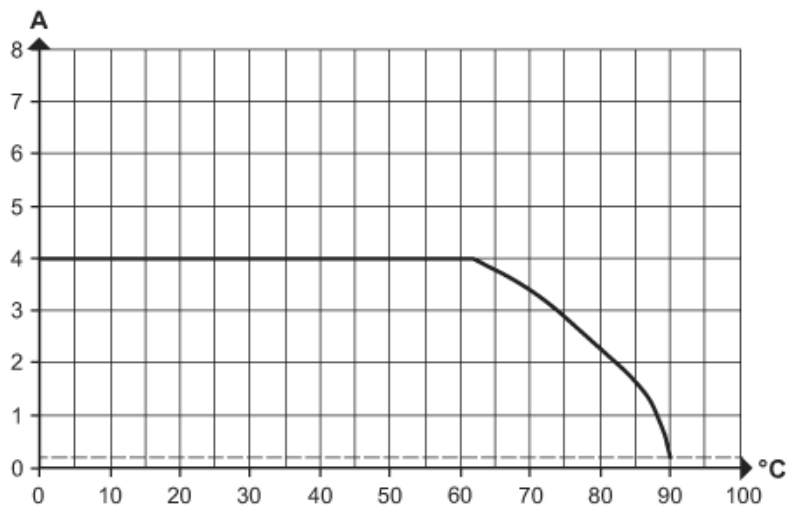
ADOAH040MSS0002K04

Diagrams and graphs

Shielding characteristics



x Frequency (MHz)
y Shielding characteristics (dB)
according to DIN EN 60512-23-3



Derating $I_{max} * 0.8$ DIN EN 60512-5-2
X Ambient temperature [°C]
Y Current [A]