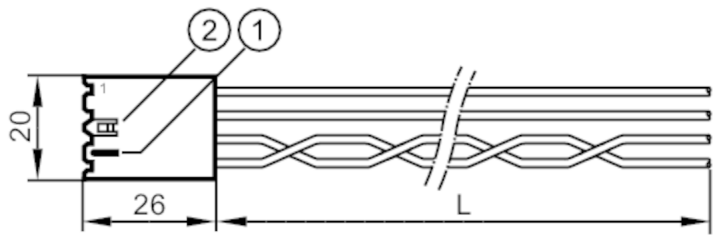




Connection cable with contact housing

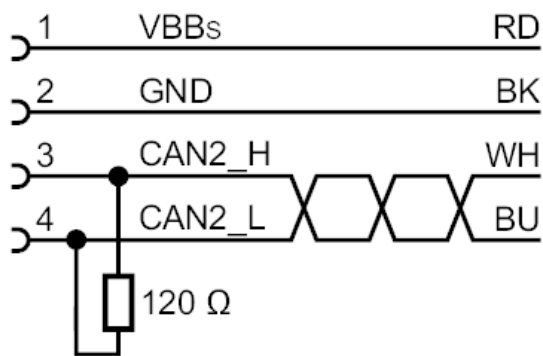
BasicCable/N2//C1.1



- 1
- 2 Snap spring



Application	
Design	for BasicController, CAN2 N2, CR04xx
Mechanical data	
Weight	[g] 58.8
Remarks	
Remarks	CAN bus terminating resistor (120 ohms) is integrated in the standard timer contact housing
Pack quantity	1 pcs.
Electrical connection	
Cable: 1.5 m; 2 x 0.50 mm² + 2 x 0.75 mm²	
Connection	



- 3/4: twisted
Core colors :
BK = black
BU = blue
RD = red
WH = white