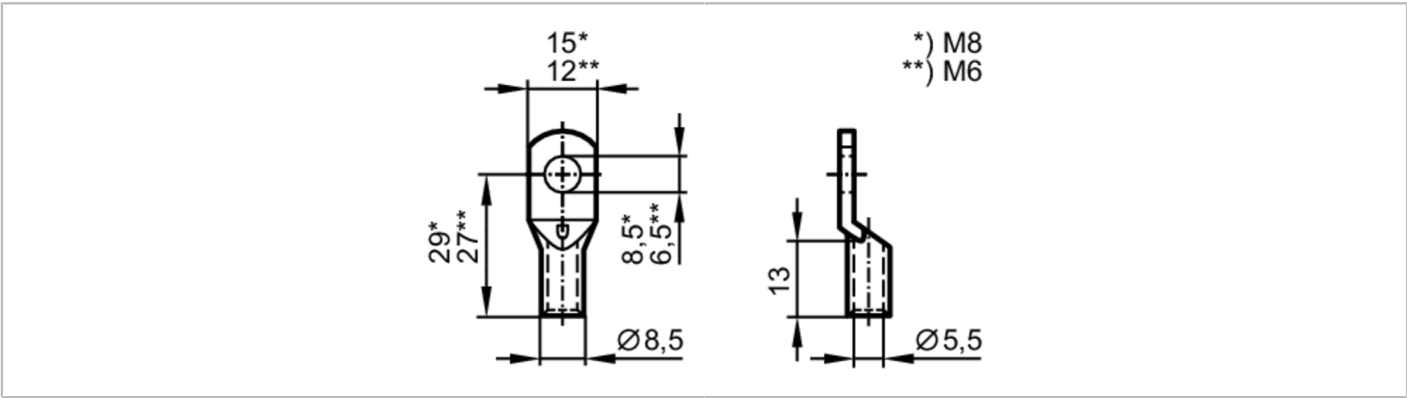


EC0465



Connecting material for power supply

BasicContact-Set/for CR0431



Application	
Design	for BasicController Relay CR0431
Mechanical data	
Weight	[g] 32.9
Accessories	
Items supplied	Tubular cable lugs: 1 x M8, 1 x M6, 16 mm², with hexagon nut, washer and protective cover protective sleeves: 1 x M6 x 10 mm
Remarks	
Pack quantity	1 pcs.
Electrical connection	
terminals:	