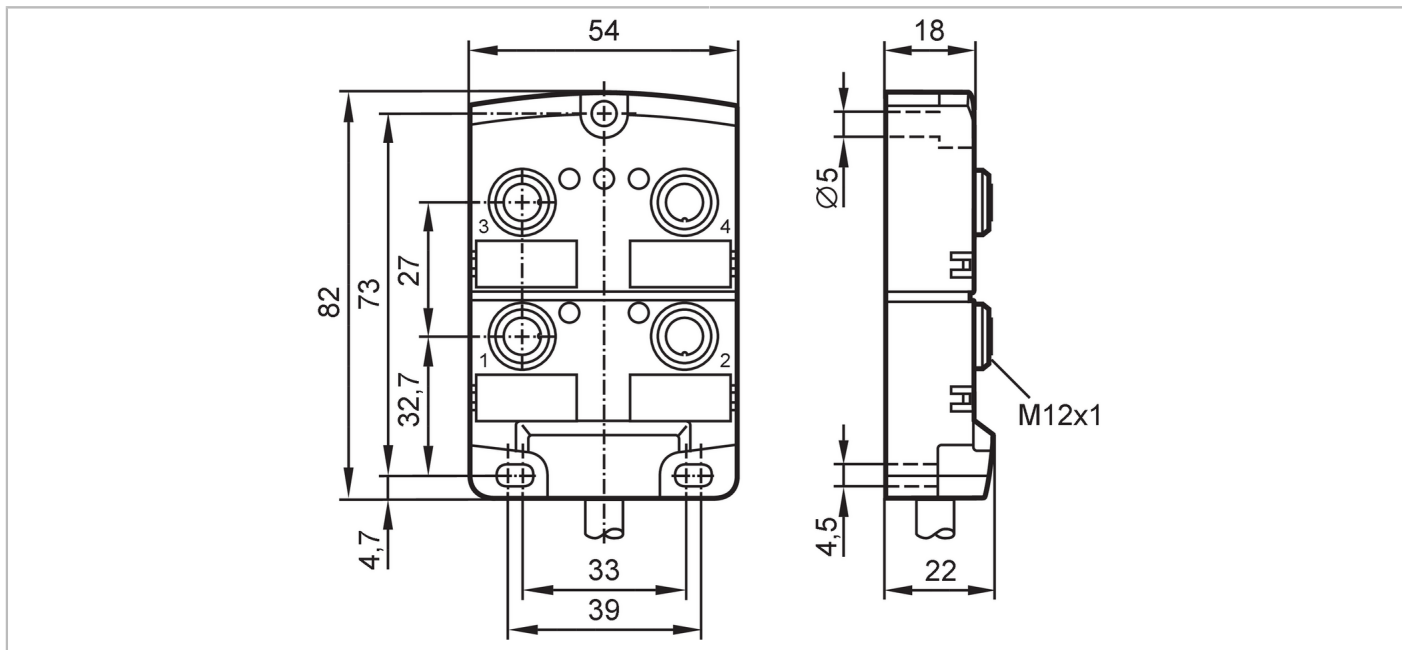


# EBC015



## Wiring block

ZDO4H055MSS0005H07



Application		
Special feature	Free from silicone; Halogen-free; gold-plated contacts; Drag chain suitability	
Application	Industrial applications; Oils and coolants	
Free from silicone	yes	
Electrical data		
Operating voltage	[V]	10...30 DC; (cULus - Class 2 source required)
Protection class		II
Max. current load per module/slot	[A]	4
Max. current load total	[A]	12
Outputs		
Electrical design		PNP
Operating conditions		
Ambient temperature	[°C]	-25...80
Ambient temperature (moving)	[°C]	-5...60
Protection		IP 67; IP 68
Tests / approvals		
UL approval	Enclosure type	Type 1
Mechanical data		
Weight	[g]	540
Housing		rectangular
Type of mounting		Backplane mounting
Dimensions	[mm]	82 x 54 x 22
Material		housing: PA
Material nut		brass, nickel-plated

# EBC015



## Wiring block

ZDO4H055MSS0005H07

Number of ports splitter box	4	
Connector type	M12	
Drag chain suitability	yes	
Drag chain suitability	Bending radius for flexible applications	min. 10 x cable diameter
	Bending cycles	> 2 Mio.

### Displays / operating elements

Display	Switching status	4 x LED, yellow
	Power	1 x LED, green

### Accessories

Items supplied	Protective caps: 2 labels: 4
----------------	---------------------------------

### Remarks

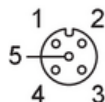
Pack quantity	1 pcs.
---------------	--------

### Electrical connection

Cable: 5 m, PUR, Halogen-free, black, Ø 7.5 mm; 4 x 0.34 mm<sup>2</sup> (43 x Ø 0.1 mm ) + 3 x 1 mm<sup>2</sup> (55 x Ø 0.15 mm )

### Electrical connection - slot

Connector: 4 x M12; coding: A; Contacts: 4, gold-plated; Locking: brass, nickel-plated; Tightening torque: 0.8...1.5 Nm



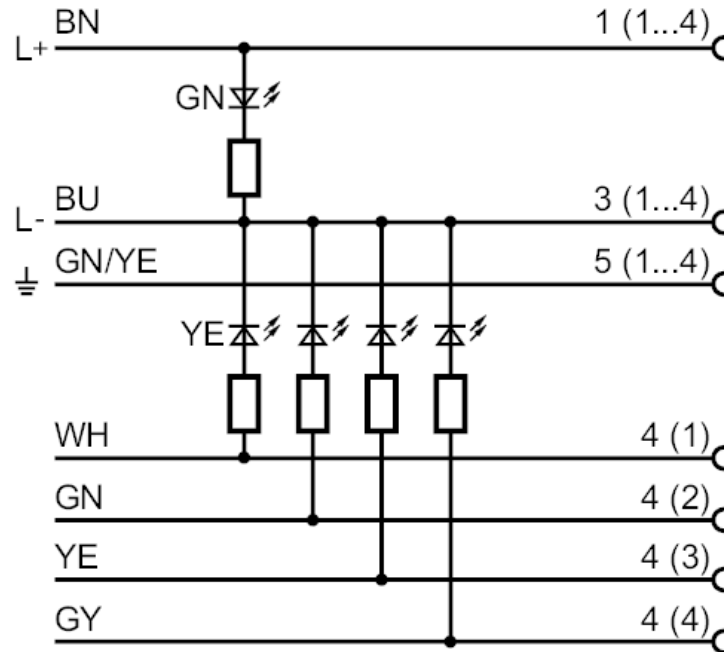
# EBC015



## Wiring block

ZDO4H055MSS0005H07

### Connection



	Core colors :
BN =	brown
BU =	blue
GN =	green
GN/YE =	green/yellow
GY =	grey
WH =	white
YE =	yellow