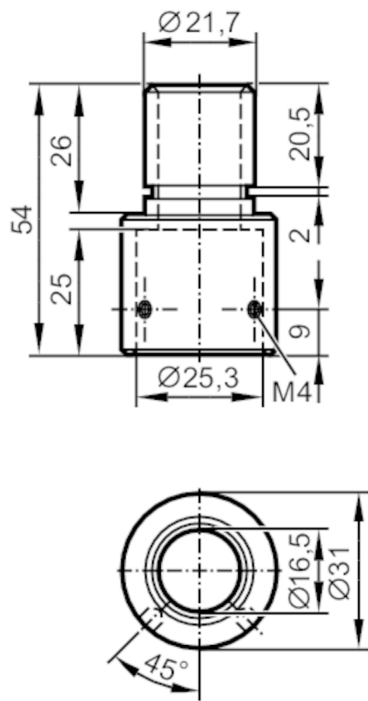


E89063



Mounting adapter

LED-Tower/Pole adapter 21,7 - 25 mm



Application

Design Reducing piece for mounting to pipes of other manufacturers Ø 21,7 / Ø 25,3

Mechanical data

Weight	[g]	32.7
Dimensions	[mm]	Ø 31 / L = 54
Inside diameter	[mm]	25.3
Outer diameter	[mm]	21.7
Material		aluminum black

Accessories

Accessories (optional)	mounting tube 100 mm, E89065
	mounting tube 300 mm, E89066
	mounting tube 800 mm, E89067

Remarks

Pack quantity	1 pcs.
---------------	--------