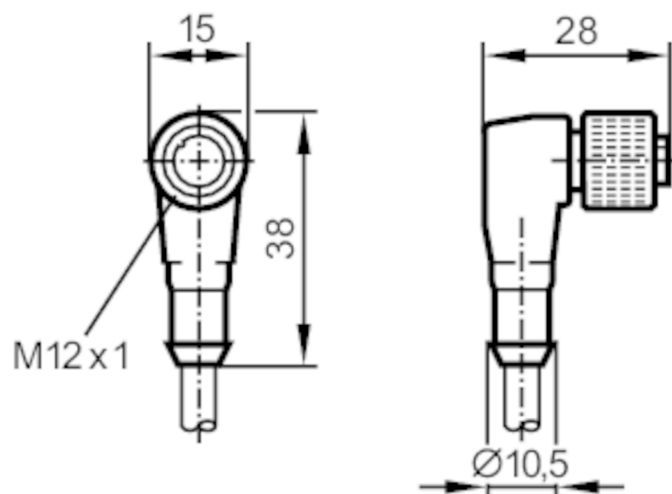




## Female cordset

ADOAH080MSS0002K08

For 8-wire cordsets the core colors are not standardized.  
Please note the wiring of the sensor and the cordsets (see data sheet).



Application		
System		screened cable
Electrical data		
Operating voltage	[V]	< 30 AC / < 36 DC
Protection class		III
Max. current load total	[A]	2
Operating conditions		
Ambient temperature	[°C]	-25...90
Protection		IP 67
Mechanical data		
Weight	[g]	148.5
Dimensions	[mm]	28 x 15 x 38
Material		TPU (urethane)
Molded-body material		TPU (urethane)
Material nut		brass, nickel-plated
Remarks		
Pack quantity		1 pcs.

# E80022



## Female cordset

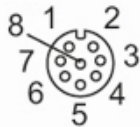
ADOAH080MSS0002K08

### Electrical connection

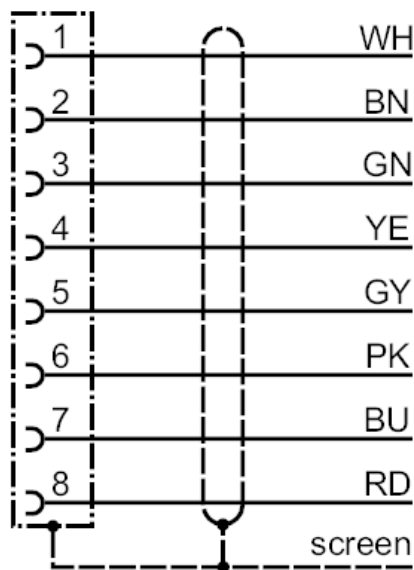
Cable: 2 m, PUR, black, screened; 8 x 0.25 mm<sup>2</sup> (14 x Ø 0.15 mm )

### Electrical connection - Socket

Connector: 1 x M12, angled; coding: A; Moulded body: TPU (urethane); Locking: brass, nickel-plated; Tightening torque: 1...1.5 Nm; Shielded connection cable: shield connected



### Connection



Colors to DIN  
47100

BN =	brown
BU =	blue
GN =	green
GY =	grey
PK =	pink
RD =	red
WH =	white
YE =	yellow
screen =	screen

Core colors :