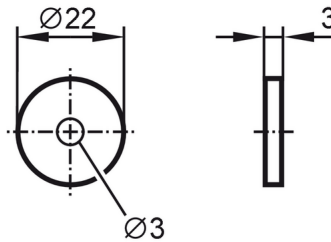


E80404



RFID tag

ID-TAG/22X3.0/06



Application		
Operating temperature (active) [°C]		-25...90
Peak temperature (passive) [°C]		120
Electrical data		
Operating frequency [MHz]		13,56
Memory size [bit]		896
Memory type		EEPROM
Chip type		ICODE SLIX
Number of the blocks		28
Block size [Byte]		4
Unique Identification Number (UID) [Byte]		8
RFID standard		ISO 15693
Max. read cycles		unlimited
Max. write cycles		100000
Operating conditions		
Ambient temperature [°C]		-25...90
Storage temperature [°C]		-25...120
Protection		IP 68
Tests / approvals		
Shock resistance	DIN IEC 68-2-27	40 g 18 ms
Vibration resistance	DIN IEC 68-2-6	10 g 10...2000 Hz
Radio approval		ISO 15693
Mechanical data		
Weight [g]		18.65
Type of mounting	Installation on metal and non-metal materials; (screw fastening ; sticking to a surface ; In case of installation on metal, mount marked side on surface (marking: B or dot))	
Dimensions [mm]		Ø 22 / L = 3
Material		PA 9T
Remarks		
Remarks		
Pack quantity		10 pcs.

E80404



RFID tag

ID-TAG/22X3.0/06

Other data

Reading distance when mounted on non-metal (mm)

ANT410 / DTI410	6
ANT411 / DTI411	10
ANT420 / DTI420 / DTM424 / DTI424 / DTM426	5
ANT421 / DTI421 / DTM425 / DTI425 / DTM427	15
ANT430 / DTI430 / DTM434 / DTI434 / DTM436	10
ANT431 / DTI431 / DTM435 / DTI435 / DTM437	15
ANT513 / DTI513 / DTC510	15
ANT515 / DTI515 / ANT516 / DTI516	5
ANT600 / DTI600	40

read distance when mounted on metal (mm)

ANT410 / DTI410	6
ANT411 / DTI411	10
ANT420 / DTI420 / DTM424 / DTI424 / DTM426	8
ANT421 / DTI421 / DTM425 / DTI425 / DTM427	16
ANT430 / DTI430 / DTM434 / DTI434 / DTM436	15
ANT431 / DTI431 / DTM435 / DTI435 / DTM437	20
ANT513 / DTI513 / DTC510	25
ANT515 / DTI515 / ANT516 / DTI516	10
ANT600 / DTI600	-