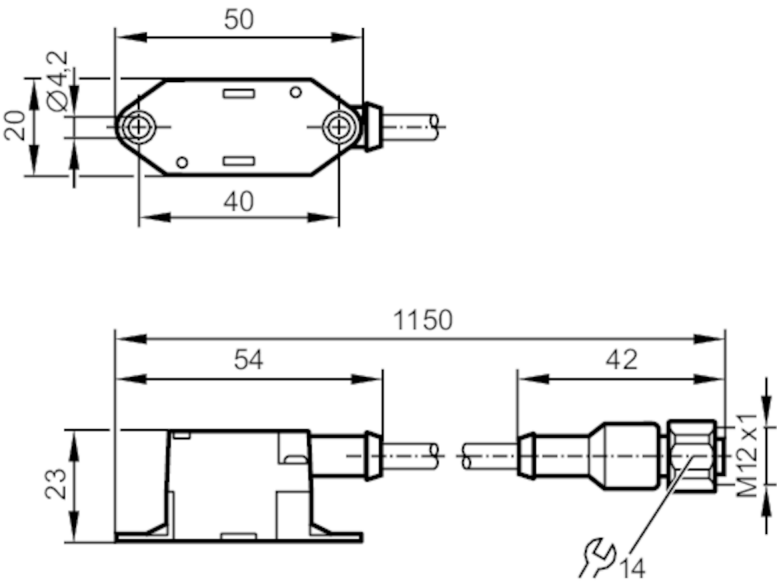


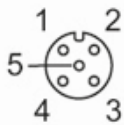


AS-Interface flat cable insulation displacement  
connector

FC connector, M12, V2A, 1m



Application		
System		gold-plated contacts
Design		AS-i
Electrical data		
Operating voltage	[V]	26.5...31.6 DC
Max. current load total	[A]	2
Operating conditions		
Ambient temperature	[°C]	-20...70
Protection		IP 67
Mechanical data		
Weight	[g]	82.7
Material		housing Upper part: PUR; housing lower part: PA 6.6; screw: stainless steel (1.4305 / 303); knurled nut: stainless steel (1.4305 / 303)
Remarks		
Remarks		The flat cable must not end in the splitter. Use a flat cable seal or heat-shrink cap for sealing.
Pack quantity		1 pcs.
Electrical connection		
Cable: 1 m, PVC, Ø 5.75 mm; 2 x 0.75 mm², PVC		
Connector: M12, straight; coding: A; Contacts: gold-plated		



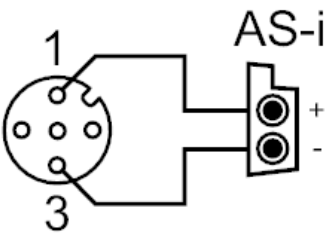
E79998



AS-Interface flat cable insulation displacement  
connector

FC connector, M12, V2A, 1m

Connection



1	AS-i +
3	AS-i -