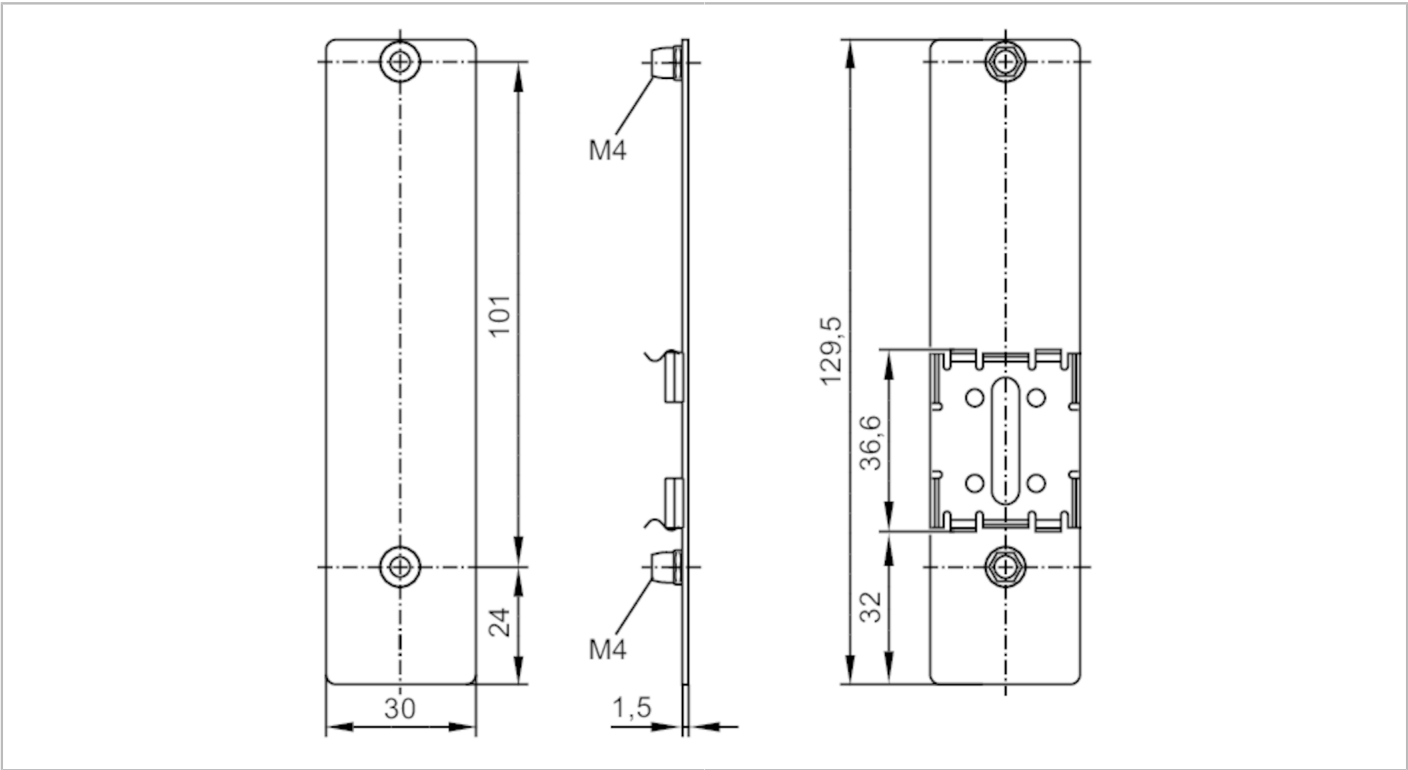


E73007



DIN rail adapter

mounting plate M8 long



Application	
Design	for CompactM8 modules
Mechanical data	
Weight	[g] 58.9
Dimensions	[mm] 129.5 x 1.5 x 30
Material	Mounting plate: stainless steel (1.4301 / 304); DIN rail clip: stainless steel (1.4310 / 301); threaded bush: stainless steel (1.4567 / 304Cu)
Accessories	
Accessories (optional)	Spring washer
	washer
	screw: 1 x M4 x 20
Remarks	
Pack quantity	1 pcs.