

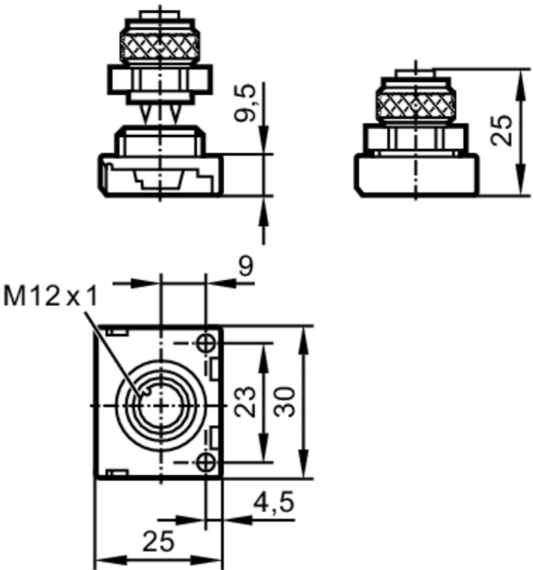


AS-Interface flat cable insulation displacement  
connector

FLAT CABLE CONNECTOR M12

Alternative articles: E75005

When selecting an alternative article and accessories please note that technical data may differ!



Application	
Design	AS-i
Electrical data	
Operating voltage [V]	26.5...31.6 DC
Max. current load total [A]	2
Operating conditions	
Ambient temperature [°C]	-25...75
Protection	IP 67
Mechanical data	
Weight [g]	17.9
Material	PA
Molded-body material	PA
Remarks	
Remarks	installation instructions First separate the fixture (orange) from the insulation displacement connector. Insert the cable in the fixture and close it again. Screw the fixture back on the insulation displacement connector.
Pack quantity	1 pcs.
Electrical connection	
1	when connected to yellow AS-i flat cable AS-i +
3	AS-i -
1	when connected to black flat cable +24V DC
3	0V

# E70096



## AS-Interface flat cable insulation displacement connector

FLAT CABLE CONNECTOR M12

### Electrical connection - Socket

Connector: 1 x M12; coding: A; Moulded body: PA

