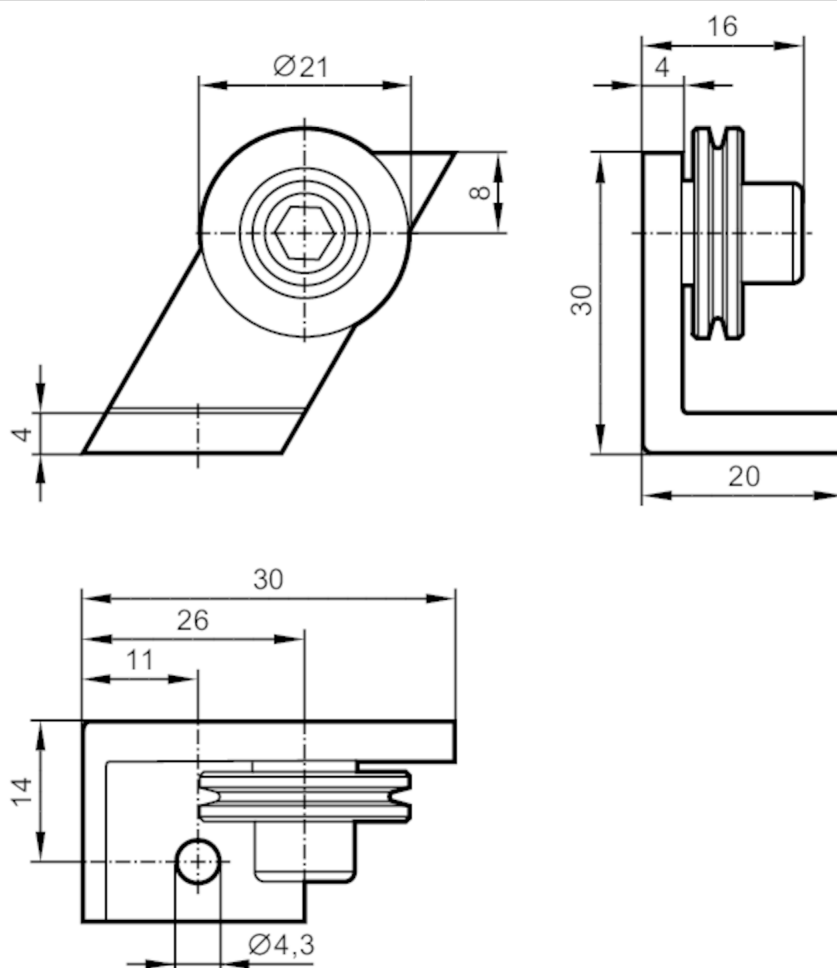


E61445



Pulley for draw-wire mechanisms

DRAW WIRE PULLEY



Application

Application for guiding wires with up to 0.8...1 mm diameter

Mechanical data

Weight	[g]	21.6
Dimensions	[mm]	36 x 32.5 x 20
Outer diameter	[mm]	21
Material		aluminum anodized

Remarks

Pack quantity 1 pcs.