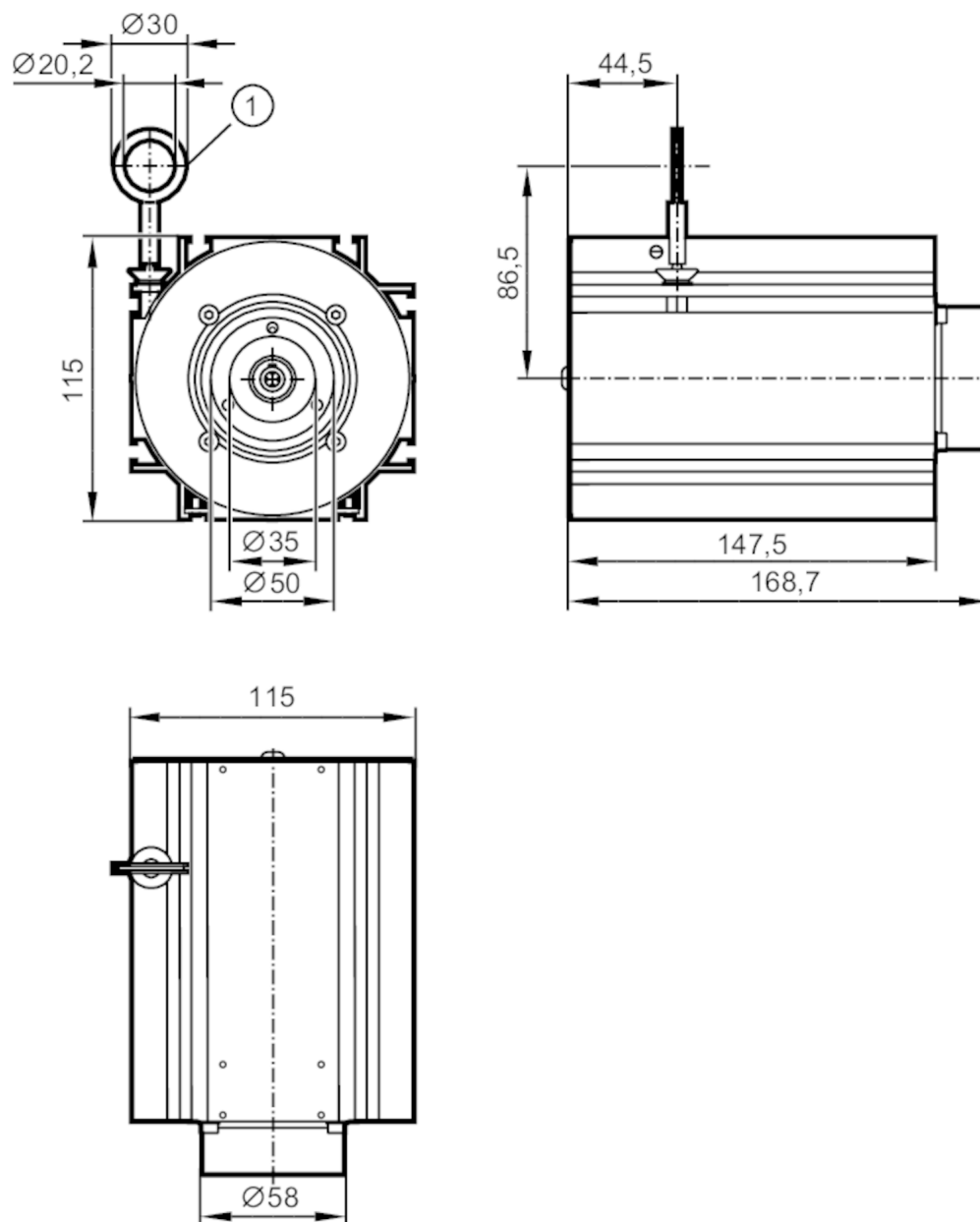


E61443



Draw-wire mechanism for encoders

DRAW WIRE 10000



1 eyelet 20.2 mm Ø

Product characteristics

Shaft design	solid shaft
Shaft diameter [mm]	6

Application

Design	for encoders with 58 mm synchro flange and 6 mm solid shaft
--------	---

Accuracy / deviations

Accuracy	± 0.01 % FSO
Repeatability	± 0,001 % FSO

Operating conditions

Ambient temperature [°C]	-20...80
Storage temperature [°C]	-40...80



Draw-wire mechanism for encoders

DRAW WIRE 10000

Storage humidity	[%]	5...95; (non condensing)
------------------	-----	--------------------------

Tests / approvals

Shock resistance	IEC628-2-27	50 g / 20 ms
Vibration resistance	IEC68-2-6	20 g / 20..200 Hz

Mechanical data

Weight	[g]	3510.8
Dimensions	[mm]	115 x 168.7 x 115
Top flange diameter	[mm]	58
Material	housing: aluminum anodized; wire: stainless steel polyamide coated	
Shaft design	solid shaft	
Shaft diameter	[mm]	6
Max. measuring length	[mm]	10000
Wire drum circumference	[mm]	315
Wire diameter	[mm]	1
Wire connection	20,2; (eyelet)	
Wire properties	max. speed of wire displacement	[m /s] 2
	max. wire acceleration	[g] 6
	max. extension force	[N] 21
	min. retraction force	[N] 8
Fixing flange	Synchro-flange	

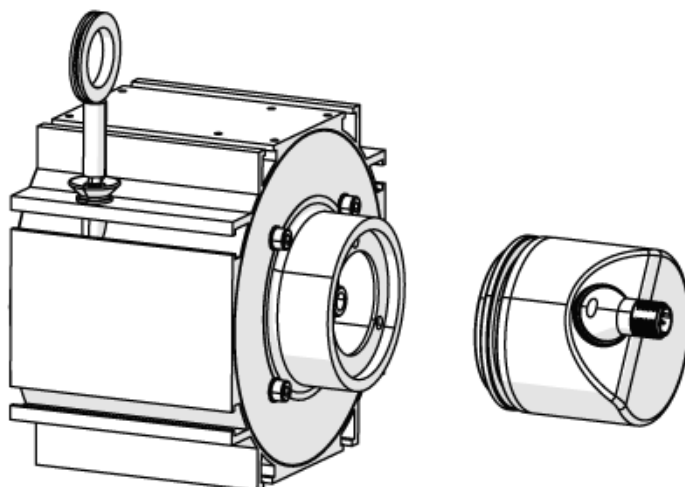
Accessories

Items supplied	screws: 3 x M4
	cylinder screws: 4 x M4
	washers
	Synchro-flange
	Coupling for encoders

Remarks

Pack quantity	1 pcs.
---------------	--------

Diagrams and graphs



Installation instruction