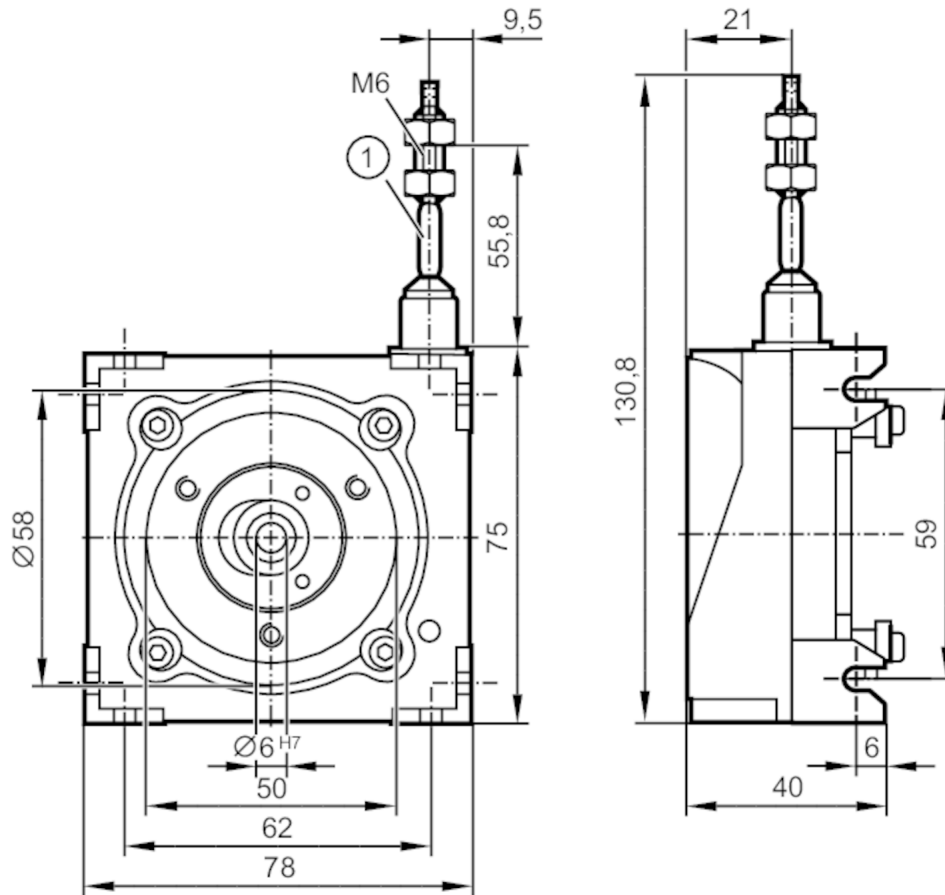


Draw-wire mechanism for encoders

DRAW WIRE 3000



1 set screw

Product characteristics

Shaft design	solid shaft
Shaft diameter [mm]	6

Application

Design	for encoders with 58 mm synchro flange and 6 mm solid shaft
--------	---

Accuracy / deviations

Accuracy	± 0.012 % FSO
Repeatability	± 0,005 % FSO

Operating conditions

Ambient temperature [°C]	-40...80
Storage temperature [°C]	-40...80
Storage humidity [%]	5...95; (non condensing)

Mechanical data

Weight [g]	598.5
Top flange diameter [mm]	58
Material	housing: diecast zinc / plastic; wire: stainless steel polyamide coated
Shaft design	solid shaft
Shaft diameter [mm]	6

E61441



Draw-wire mechanism for encoders

DRAW WIRE 3000

Max. measuring length	[mm]	3000		
Wire drum circumference	[mm]	200		
Wire diameter	[mm]	0.87		
Wire connection		M6		
Wire properties	max. speed of wire displacement	[m /s]	0,8	
	max. wire acceleration	[g]	1	
	max. extension force	[N]	3	
	min. retraction force	[N]	2,5	
Fixing flange		Synchro-flange		

Remarks

Pack quantity	1 pcs.
---------------	--------

Diagrams and graphs

Installation instruction

