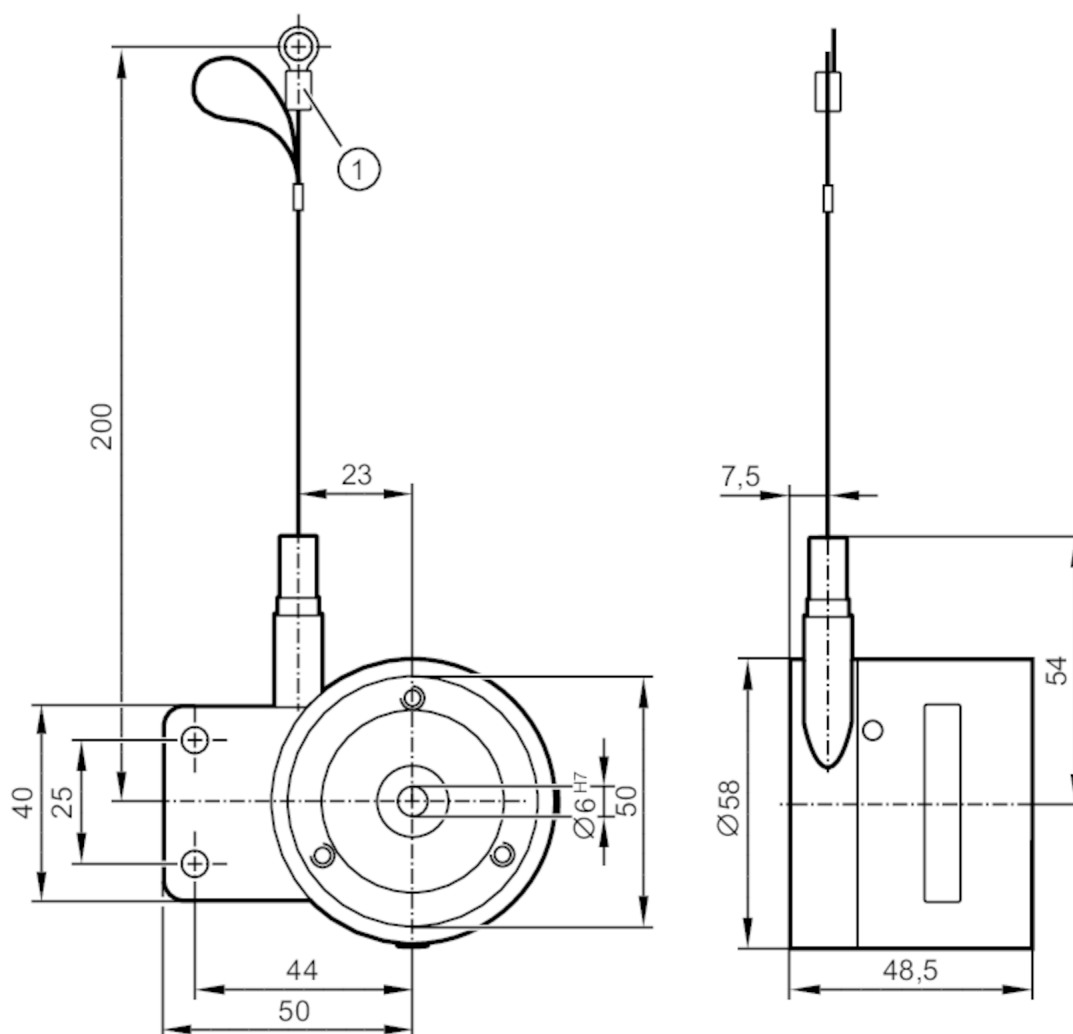


E61439



Draw-wire mechanism for encoders

DRAW WIRE 1900



1 eyelet Ø 5mm

Product characteristics

Shaft design	solid shaft
Shaft diameter [mm]	6

Application

Design	for encoders with 58 mm synchro flange and 6 mm solid shaft
--------	---

Accuracy / deviations

Accuracy	± 0.02 % FSO
Repeatability	± 0,006 % FSO

Operating conditions

Ambient temperature	[°C]	-20...85
Storage temperature	[°C]	-40...85
Storage humidity	[%]	5...95; (non condensing)

Tests / approvals

Shock resistance	IEC628-2-27	50 g / 10 ms
Vibration resistance	IEC68-2-6	20 g / 20..200 Hz

Mechanical data

Weight	[g]	598.5
--------	-----	-------

E61439



Draw-wire mechanism for encoders

DRAW WIRE 1900

Top flange diameter	[mm]	58	
Material		housing: aluminum; wire: stainless steel polyamide coated	
Shaft design		solid shaft	
Shaft diameter	[mm]	6	
Max. measuring length	[mm]	1900	
Wire drum circumference	[mm]	150	
Wire diameter	[mm]	0.45	
Wire connection		5,5; (eyelet)	
Wire properties	max. speed of wire displacement	[m /s]	2
	max. wire acceleration	[g]	12
	max. extension force	[N]	5
	min. retraction force	[N]	3,5
Fixing flange		Synchro-flange	
Remarks			
Pack quantity		1 pcs.	

E61439



Draw-wire mechanism for encoders

DRAW WIRE 1900

Diagrams and graphs

Installation instruction

