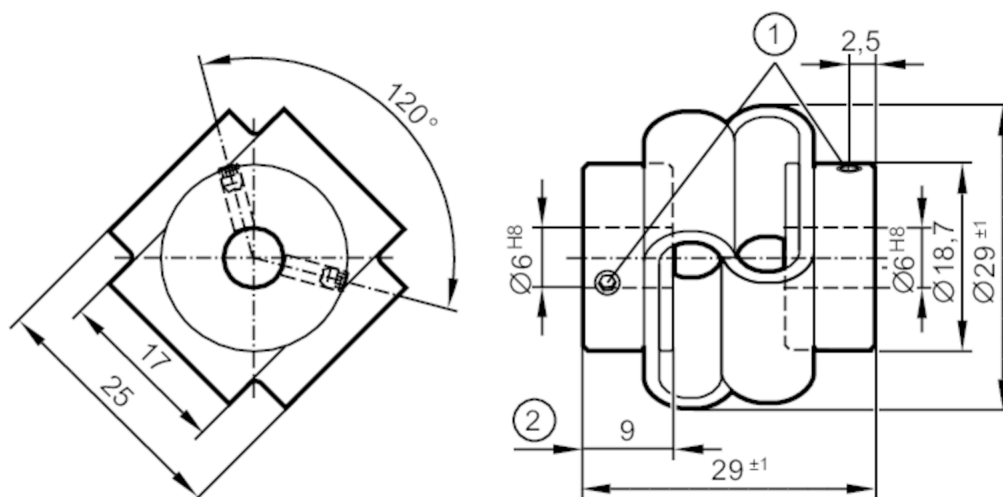


# E61435



## Double-loop coupling

DL COUPLING V2A 29-6-6-29-SV



- 1 M3 x 4 - ISO 4029 A2 (4x)  
2 Depth der Klemmnabe

### Operating conditions

Ambient temperature [°C] -30...80

### Mechanical data

Weight [g]	27.6
Material	shaft adapter: stainless steel (1.4305 / 303); double-loop coupling: PU
Tightening torque [Nm]	tightening torque screws: 100 Ncm
External diameter D [mm]	29
Inside diameter 1 [mm]	6
Inside diameter 2 [mm]	6
Depth of the clamping hub [mm]	9
Clamping screw [mm]	M3 x 4 - ISO 4029 A2 (4x)
Length [mm]	29
Max. revolution, mechanical [U/min]	3000
Max. axial shaft misalignment [mm]	± 2
Max. radial shaft misalignment [mm]	± 2
Max. angular displacement [°]	± 10
Rigidity of the torsion spring [Nm/rad]	13

### Remarks

Remarks	The data indicated apply to couplings with the above hub borings at an ambient temperature of 23 °C. The values of radial, angular and axial displacement are maximum values which must not reach their maximum simultaneously while in operation.
Pack quantity	1 pcs.