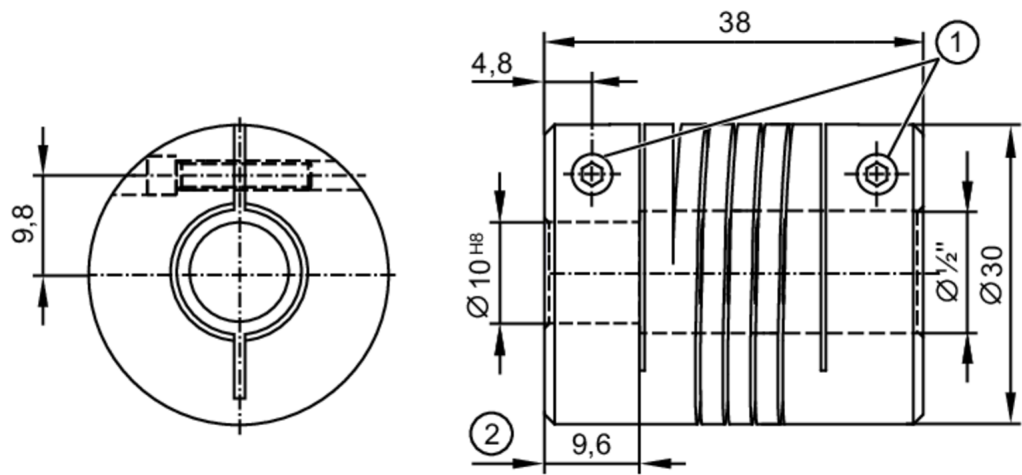


E60208



Flexible coupling for encoders

COUPLING 30-10-12-38-KV



- 1 M4 x 12 - ISO 4762 (2x)
- 2 Depth der Klemmnabe

Mechanical data		
Weight	[g]	58
Dimensions	[mm]	Ø 30 / L = 38
Material		aluminum
Tightening torque	[Nm]	tightening torque screws: 120 Ncm
External diameter D	[mm]	30
Inside diameter 1	[mm]	10
Inside diameter 2	[mm]	12,7 mm / 1/2" / 1/2 inch
Depth of the clamping hub	[mm]	9.6
Clamping screw	[mm]	M4 x 12 - ISO 4762 (2 x)
Length	[mm]	38
Max. revolution, mechanical	[U/min]	6000
Max. axial shaft misalignment	[mm]	± 0,5
Max. radial shaft misalignment	[mm]	± 0,35
Max. angular displacement	[°]	± 4,0
Remarks		
Remarks	The data indicated apply to couplings with the above hub borings at an ambient temperature of 23 °C.	
	The values of radial, angular and axial displacement are maximum values which must not reach their maximum simultaneously while in operation.	
Pack quantity	1 pcs.	