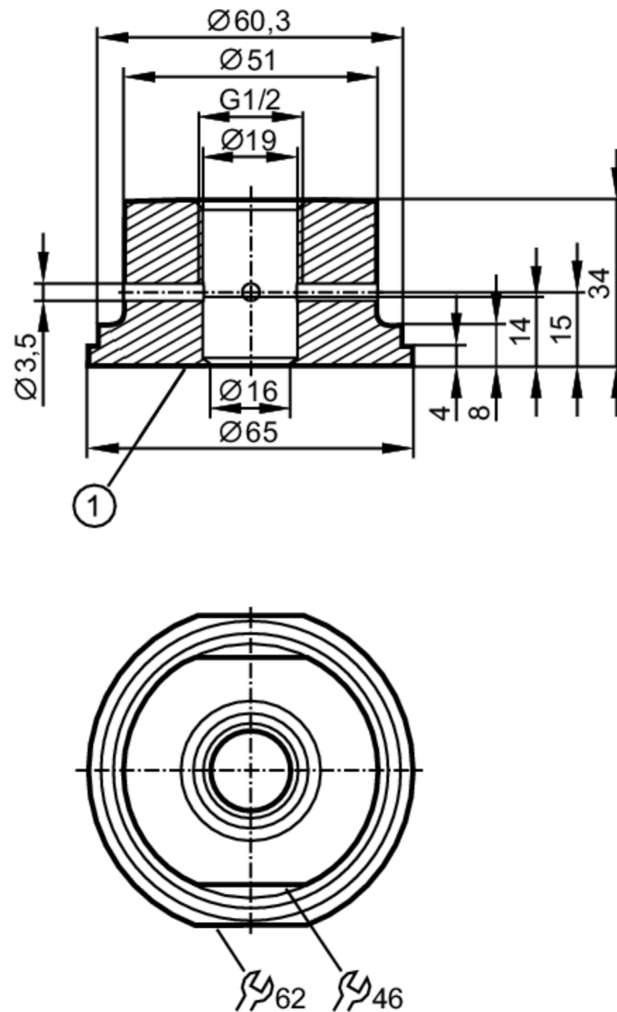




## Process adapter for SMS pipe fitting

ADAPT G1/2 - SMS DN50/2"



1 Sealing edge



EC 1935/2004 FCM FDA

### Application

Design	with leakage port (3A)
Pressure rating [bar]	16

### Tests / approvals

Pressure equipment directive	A possible classification to PED depends on the application and has to be carried out by the user / operator.
Safety instructions	The compatibility between medium and product material has to be checked in all applications.

### Mechanical data

Weight [g]	570.5
Material	stainless steel (1.4435 / 316L)
Sensor connection	G 1/2 sealing cone
Process connection	SMS pipe fitting DN50 (2")
Surface characteristics Ra/Rz of the wetted parts	< 0.8 / 8
Sealing	metal to PEEK

E43344



Process adapter for SMS pipe fitting

ADAPT G1/2 - SMS DN50/2"

Hygienic equipment class to DIN 11866	H3
Remarks	
Pack quantity	1 pcs.