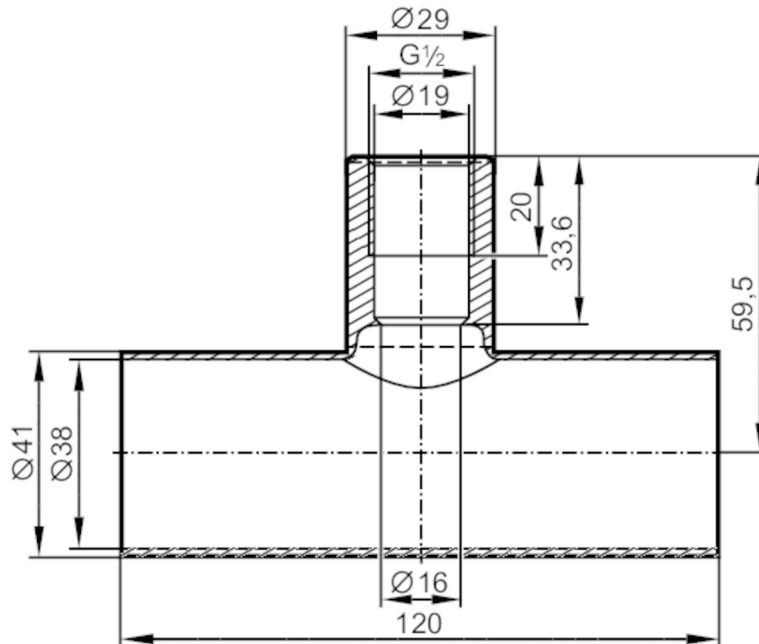


# E43317



## T-piece

T-PIPE/G1/2/L120/DN40



EC 1935/2004 EHEDG Tested **FCM**

### Application

Design	for sensors and adapters with process connection G 1/2 A
Pressure rating [bar]	25

### Tests / approvals

Pressure equipment directive	A possible classification to PED depends on the application and has to be carried out by the user / operator.
Safety instructions	The compatibility between medium and product material has to be checked in all applications.

### Mechanical data

Weight [g]	407.5
Material	stainless steel (1.4404 / 316L)
Sensor connection	G 1/2 sealing cone
Process connection	Welding adapter Ø 41 mm
Surface characteristics Ra/Rz of the wetted parts	0.8 / 4

### Accessories

Items supplied	O-ring: 1, FKM
----------------	----------------

### Remarks

Pack quantity	1 pcs.
---------------	--------