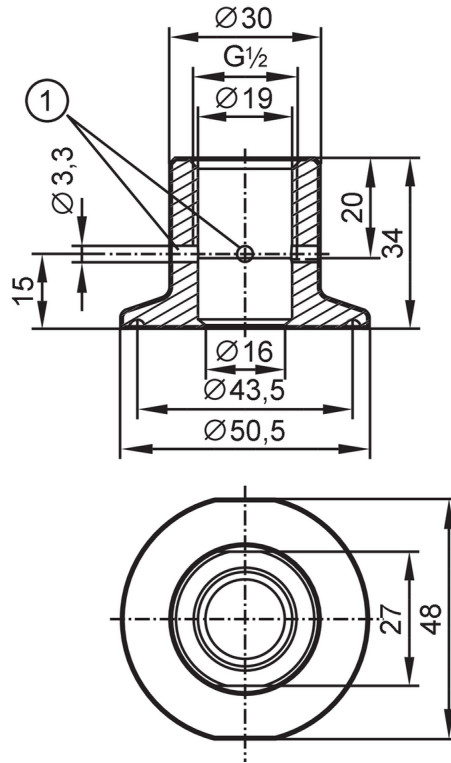


# E43311



## Process adapter Tri-Clamp

ADAPT G1/2-CLAMP (1") 3A



1 Leakage port



CRN EC 1935/2004 EHEDG Certified FCM FDA

### Application

Design	with leakage port (3A)	
Pressure rating	25 bar	2.5 MPa
MAWP (for applications according to CRN) [bar]	25	

### Mechanical data

Weight [g]	203
Material	process adapter: stainless steel (1.4435 / 316L) surface characteristics: Ra < 0,4 µm / Rz 4 µm
Sensor connection	G 1/2 sealing cone
Process connection	Clamp DN25...DN40 (1...1,5") DIN 32676 (ISO 2852)
Surface characteristics Ra/Rz of the wetted parts	Ra < 0.4 µm / Rz = 4 µm

### Remarks

Pack quantity	1 pcs.
---------------	--------