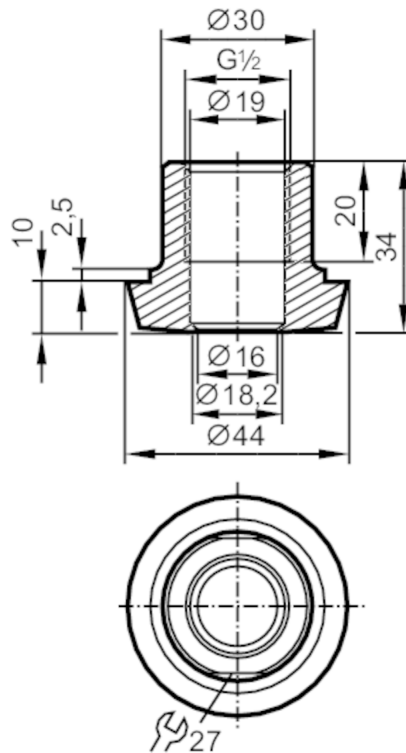


E43304



Process adapter sanitary pipe fitting

ADAPT G1/2-DIN11851 DN25



EC 1935/2004 FCM 

Application

Pressure rating [bar] 40

Tests / approvals

Pressure equipment directive	A possible classification to PED depends on the application and has to be carried out by the user / operator.
Safety instructions	The compatibility between medium and product material has to be checked in all applications.

Mechanical data

Weight [g]	219.5
Material	stainless steel (1.4435 / 316L)
Sensor connection	G 1/2 sealing cone
Process connection	Hygienic pipe fitting DN25 (1") DIN 11851
Surface characteristics Ra/Rz of the wetted parts	0.4 / 4
Hygienic equipment class to DIN 11866	H4

Remarks

Pack quantity 1 pcs.