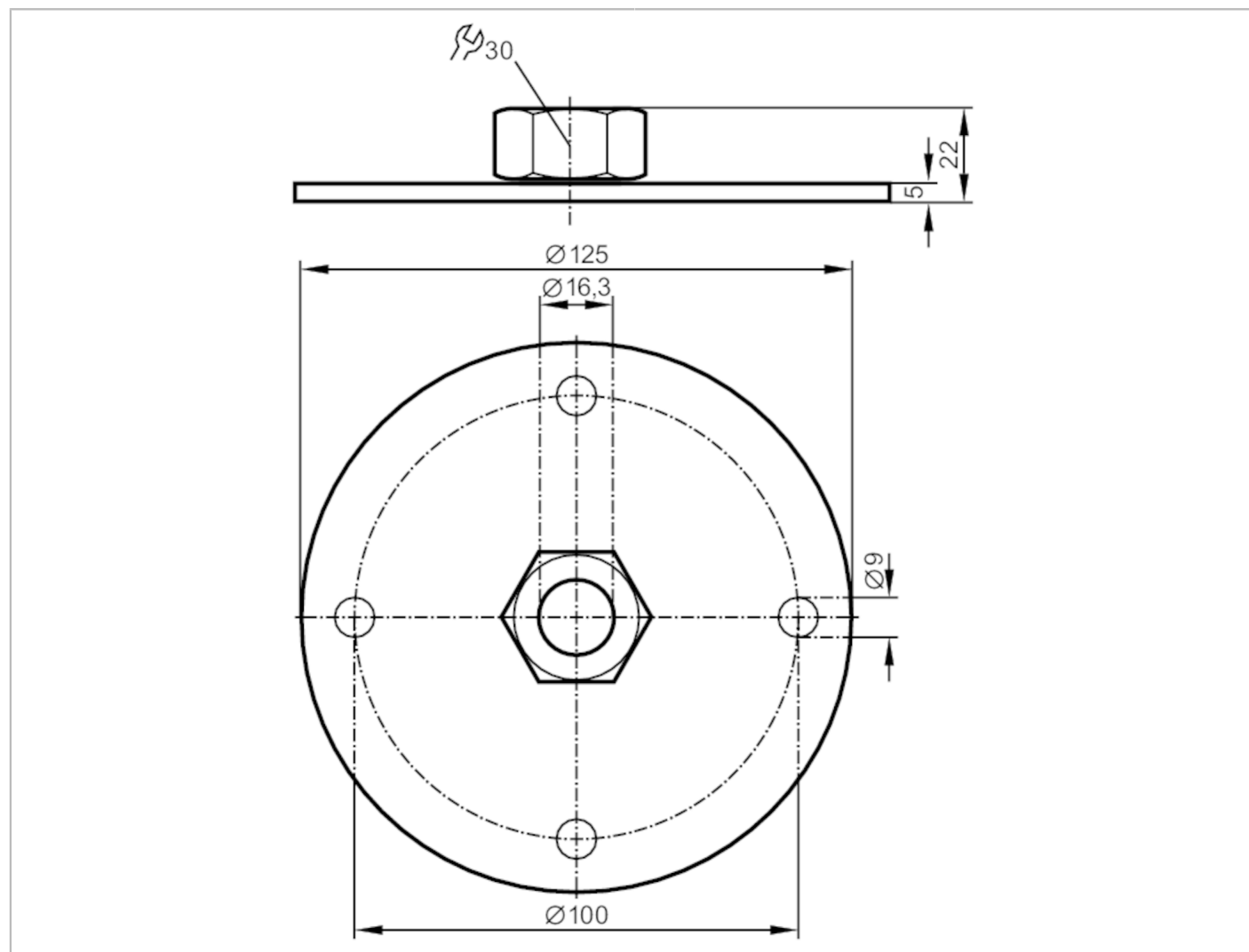


E43005



Flange plate for level sensors

FLANGE PLATE 100-125 D16



Application		
Design		for capacitive level sensors LK, LI, LT, LL
Pressure rating	[bar]	0.5
Operating conditions		
Ambient temperature	[°C]	0...80
Mechanical data		
Weight	[g]	252
Material		flange: aluminum anodized; knurled nut: stainless steel; Spacer: brass; clamping ring: FKM
Tightening torque	[Nm]	6...9
Sensor connection		Clamp fitting Ø 16 mm
Process connection		flange
Remarks		
Pack quantity		1 pcs.