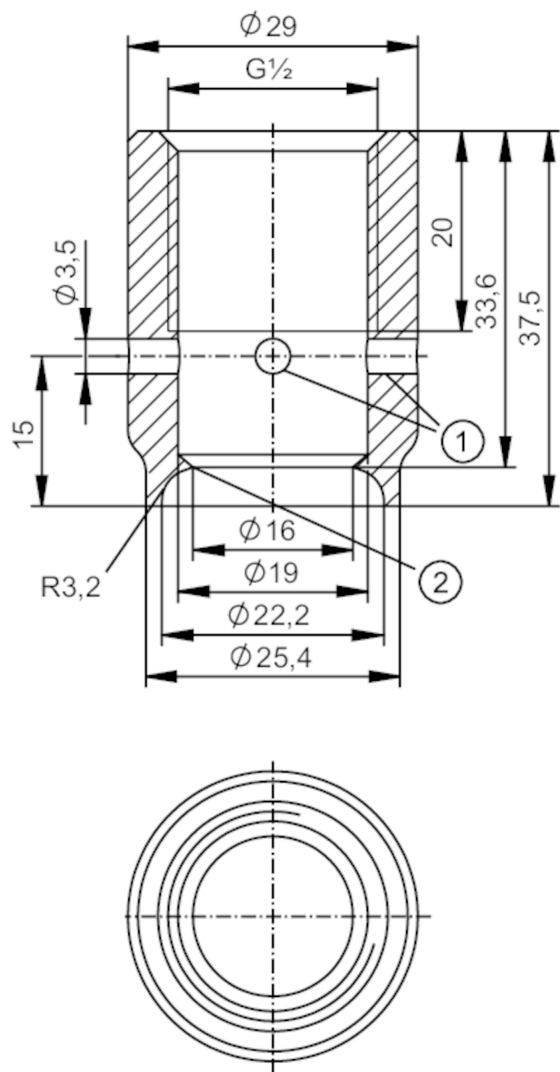




Welding adapter for process sensors

ADAPT G1/2-WELD FOR PIPE 3A



- 1 Leakage port (4x)
- 2 Sealing edge



Application	
Design	for pipes, with leakage port (3A)
Pressure rating [bar]	50
Note on pressure rating	for the connection sensor - adapter
Tests / approvals	
Pressure equipment directive	A possible classification to PED depends on the application and has to be carried out by the user / operator.
Safety instructions	The compatibility between medium and product material has to be checked in all applications.
Mechanical data	
Weight [g]	168.7
Material	stainless steel (1.4435 / 316L)
Sensor connection	G 1/2 sealing cone

# E43412



## Welding adapter for process sensors

ADAPT G1/2-WELD FOR PIPE 3A

Process connection	Welding adapter Ø 29 mm
Surface characteristics Ra/Rz of the wetted parts	0.4 / 4
Remarks	
Pack quantity	1 pcs.