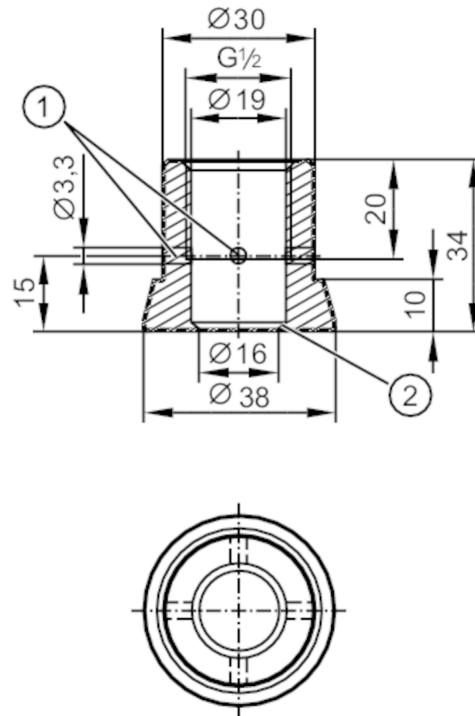




Welding adapter for process sensors

ADAPT G1/2-WELD D38 3A



- 1 Leakage port
2 Sealing edge



CRN EC 1935/2004 EHEDG Certified FCM FDA

Application

Design	with leakage port (3A)
Pressure rating [bar]	50
Note on pressure rating	for the connection sensor - adapter
MAWP (for applications according to CRN) [bar]	50

Tests / approvals

Pressure equipment directive	A possible classification to PED depends on the application and has to be carried out by the user / operator.
Safety instructions	The compatibility between medium and product material has to be checked in all applications.

Mechanical data

Weight [g]	205.5
Material	stainless steel (1.4435 / 316L)
Sensor connection	G 1/2 sealing cone
Process connection	Welding adapter Ø 38 mm
Surface characteristics Ra/Rz of the wetted parts	0.4 / 4

Remarks

Pack quantity	1 pcs.
---------------	--------