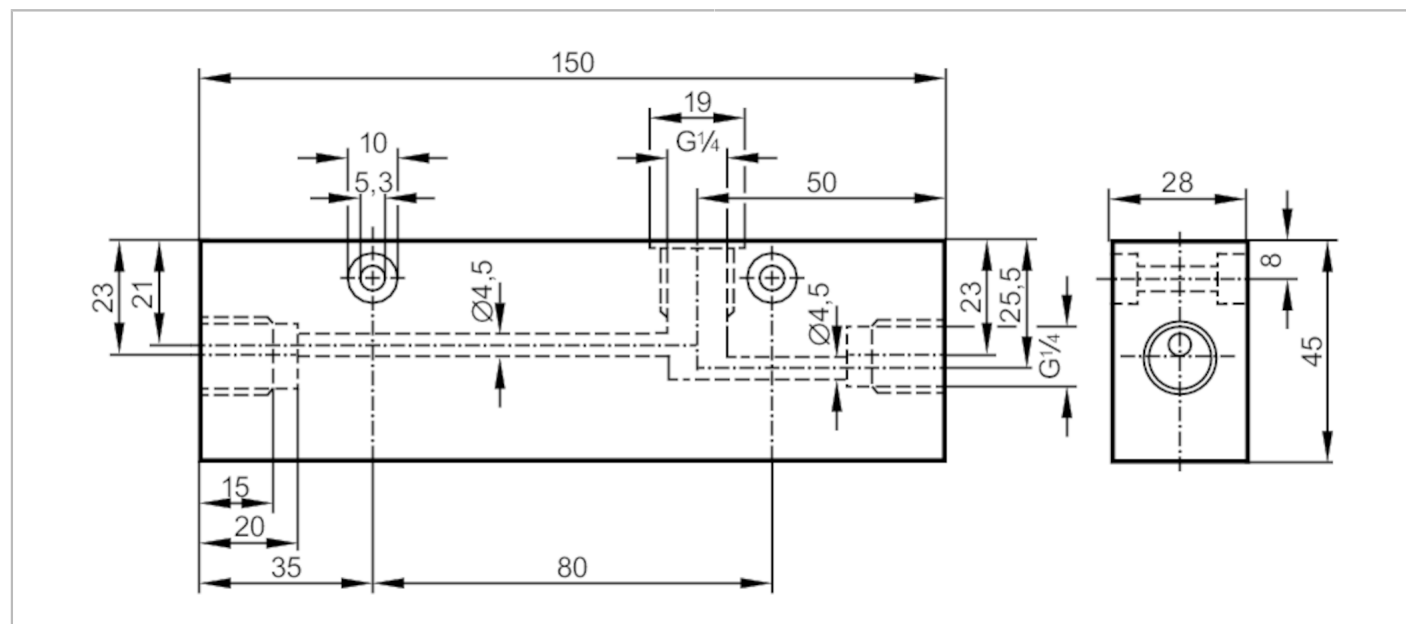


# E40187



## Process adapter for small volumetric flow quantities

ADAPTBLOCK D4,5 G1/4 PVC



Application	
Design	for flow sensors SID, SF5
Flow range [l/min]	0...0.5; ((SI1xxx); 0...1.0 (SI5xxx); factory setting with water)
Application	for industrial applications
Media	liquids and gases
Medium temperature [°C]	-25...60
Pressure rating [bar]	6
Mechanical data	
Weight [g]	420
Material	PVC
Sensor connection	M18 x 1,5
Process connection	G 1/4
Accessories	
Items supplied	Adapter: 1 x G1/4 BSPP, E40099 sealings: 1, U-seal
Remarks	
Remarks	Can only be used in combination with the flow sensor's relative operating mode.
Pack quantity	1 pcs.