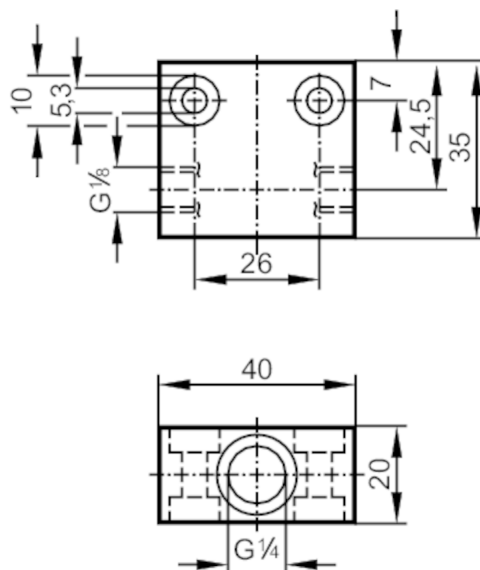




## Process adapter for small volumetric flow quantities

FLOW ADAPT SF PTFE



### Application

Design	for flow sensors with ceramic probe G 1/4
Installation	via internal G1/8A male thread, any mounting position
Medium temperature [°C]	0...80
Pressure rating [bar]	30

### Measuring/setting range

Flow range [ml/min]	2...50
---------------------	--------

### Tests / approvals

Pressure equipment directive	A possible classification to PED depends on the application and has to be carried out by the user / operator.
Safety instructions	The compatibility between medium and product material has to be checked in all applications.

### Mechanical data

Weight [g]	48
Material	PTFE
Sensor connection	G 1/4
Process connection	G 1/8

### Remarks

Remarks	Can only be used in combination with the flow sensor's relative operating mode.
Pack quantity	1 pcs.