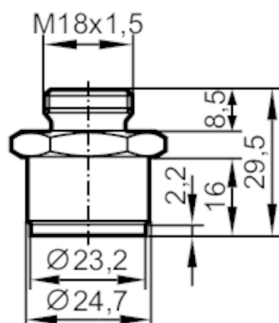


E40148



Welding adapter for process sensors

ADAPT /SI/9/ /M18X1,5/ /



Application

| | |
|-----------------------|-----------------------------|
| Application | for industrial applications |
| Media | liquids and gases |
| Pressure rating [bar] | 16 |

Tests / approvals

| | |
|------------------------------|---|
| Pressure equipment directive | A possible classification to PED depends on the application and has to be carried out by the user / operator. |
| Safety instructions | The compatibility between medium and product material has to be checked in all applications. |

Mechanical data

| | |
|----------------------|---------------------------------------|
| Weight [g] | 15.6 |
| Type of mounting | PVC adapter to be glued into the pipe |
| Material | PVC |
| Sensor connection | M18 x 1,5 Internal thread |
| Process connection | Welding adapter Ø 23 mm |
| Insertion depth [mm] | 21; (Measuring probes SID, SFD, TN) |

Remarks

| | |
|---------------|--------|
| Pack quantity | 1 pcs. |
|---------------|--------|