

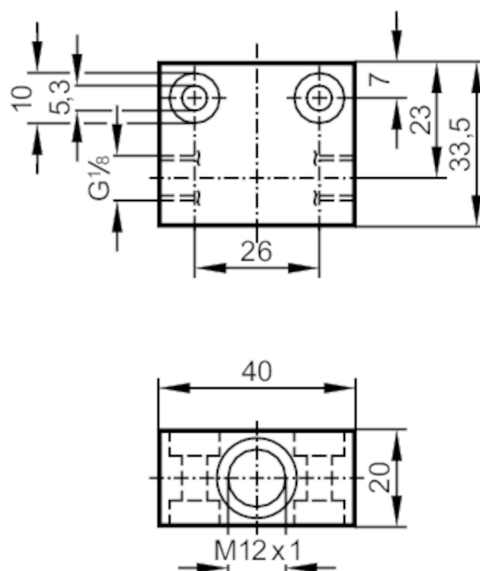
# E40130



## Process adapter for small volumetric flow quantities

FLOW ADAPT SI TI

Article no longer available - archive entry



Application		
Design		for flow sensors and compact flow monitors \$mit_Adapter_singular
Installation		via internal G1/8A male thread, any mounting position
Medium temperature	[°C]	0...80; (Max. temperature gradient of medium: 1 K/min)
Pressure rating	[bar]	30
Measuring/setting range		
Flow range	[ml/min]	2...100
Tests / approvals		
Pressure equipment directive		A possible classification to PED depends on the application and has to be carried out by the user / operator.
Safety instructions		The compatibility between medium and product material has to be checked in all applications.
Mechanical data		
Weight	[g]	92.8
Dimensions	[mm]	M12 x 1
Thread designation		M12 x 1
Material		titanium (3.7235)
Remarks		
Pack quantity		1 pcs.