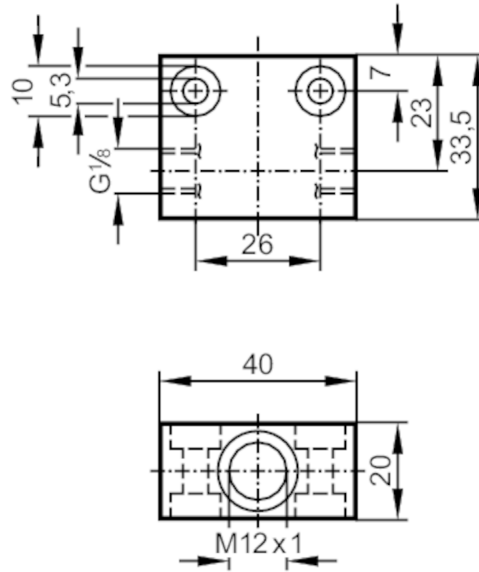


E40129



Process adapter for small volumetric flow quantities

FLOW ADAPT SI



Application		
Design		for flow sensors and compact flow monitors
Application		for industrial applications
Installation		via internal G1/8A male thread, any mounting position
Media		liquids and gases
Medium temperature	[°C]	0...80; (Max. temperature gradient of medium: 1 K/min)
Pressure rating	[bar]	300
Measuring/setting range		
Flow range	[ml/min]	2...100
Tests / approvals		
Pressure equipment directive		A possible classification to PED depends on the application and has to be carried out by the user / operator.
Safety instructions		The compatibility between medium and product material has to be checked in all applications.
Mechanical data		
Weight	[g]	156.5
Dimensions	[mm]	M12 x 1
Thread designation		M12 x 1
Material		stainless steel (1.4404 / 316L)
Sensor connection		M12 x 1
Process connection		G 1/8
Accessories		
Items supplied		sealings: 1, U-seal
Accessories (optional)		Adapter: ≤ 30 bar, E40101 Adapter: ≤ 300 bar, E40236
Remarks		
Remarks		Can only be used in combination with the flow sensor's relative operating mode.
Pack quantity		1 pcs.