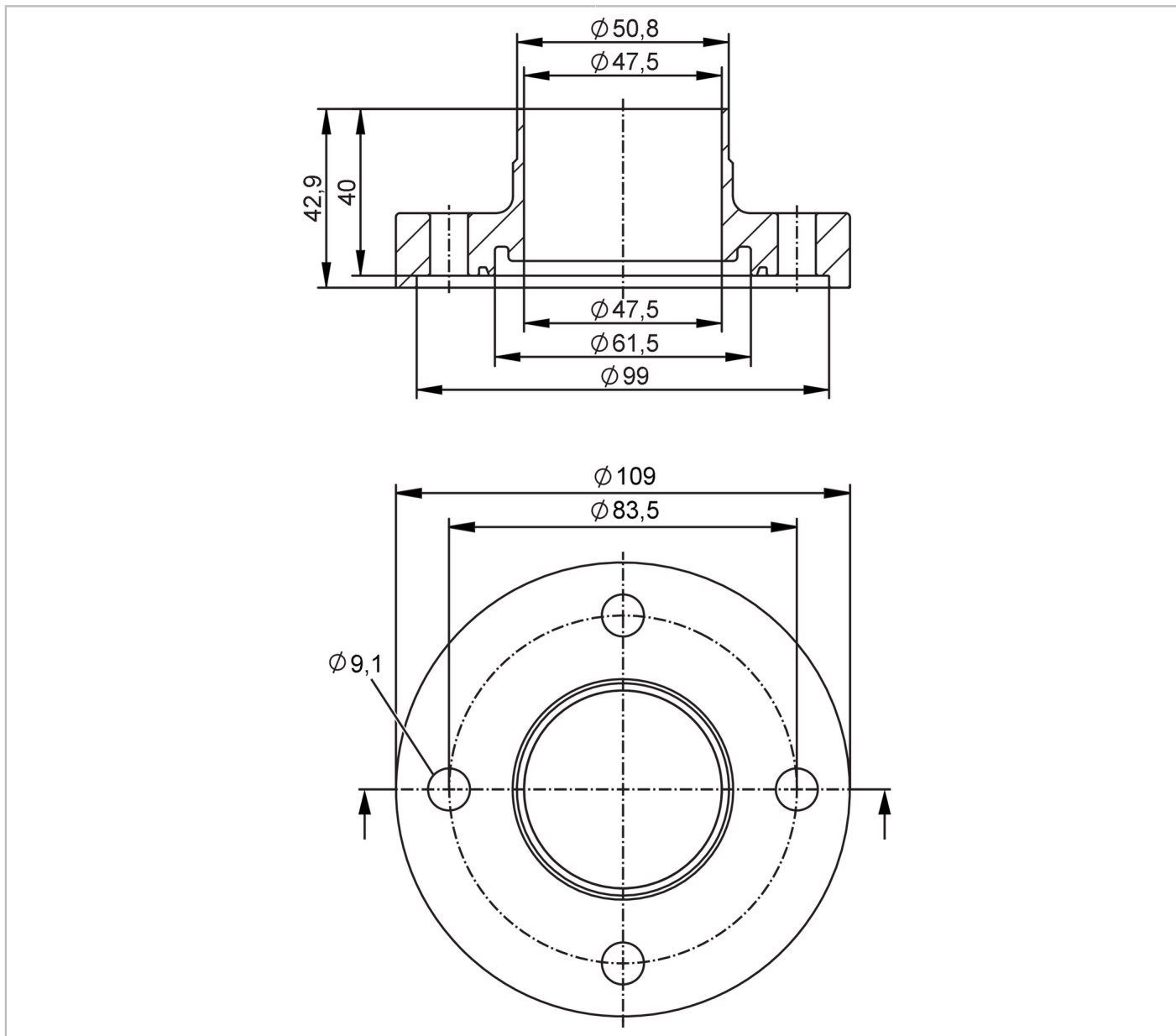


E40623



Welding adapters EN10357 series C (ASME BPE)

ADAPT EN10357-C DN50



EC 1935/2004 FCM FDA

Application	
Design	for flow meter SMF
Application	food and beverage industry; hygienic systems
Pressure rating	25 bar 2.5 MPa
Tests / approvals	
Pressure equipment directive	A possible classification to PED depends on the application and has to be carried out by the user / operator.
Safety instructions	The compatibility between medium and product material has to be checked in all applications.
Mechanical data	
Weight [g]	2580.4
Housing	tubular

E40623



Welding adapters EN10357 series C (ASME BPE)

ADAPT EN10357-C DN50

Dimensions	[mm]	Ø 109 / L = 42.9
Materials (wetted parts)		stainless steel (1.4404 / 316L)
Nominal diameter		DN50 (2")
Sensor connection		ifm-specific device flange
Process connection		Welding adapter EN10357 series C (ASME BPE)
Process connection suitable for pipe standard		(DIN 11866 series C); (BS 4825 Part 1); (DIN EN 10357 series C)
Surface characteristics Ra/Rz of the wetted parts		Ra < 0.4 µm
Accessories		
Items supplied		screws 8
Remarks		
Pack quantity		2 pcs.