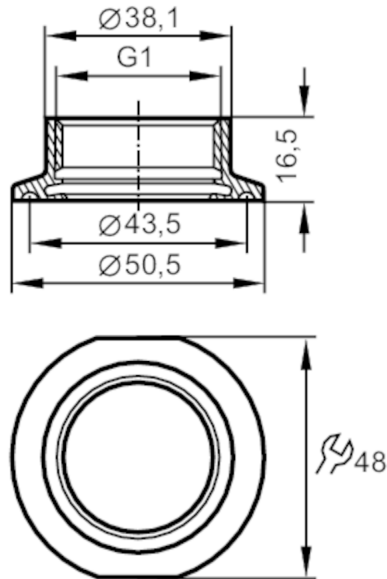




Process adapter Tri-Clamp

ADAPT IFM-CLAMP ISO2852 1-1.5"

CRN EC 1935/2004 EHEDG Tested 

Application		
Pressure rating	[bar]	16
Tests / approvals		
Pressure equipment directive	A possible classification to PED depends on the application and has to be carried out by the user / operator.	
Safety instructions	The compatibility between medium and product material has to be checked in all applications.	
Mechanical data		
Weight	[g]	100.5
Materials (wetted parts)	stainless steel (1.4435 / 316L) ; surface characteristics : Ra<0,4 / Rz 4	
Sensor connection	G 1 Internal thread Aseptoflex Vario	
Process connection	Clamp DN25...DN40 (1...1,5") DIN 32676 (ISO 2852)	
Sealing	Gasket	
Hygienic equipment class to DIN 11866	H4	
Accessories		
Items supplied	O-ring: 1 x 24 x 2, EPDM, FDA compliant, E30054	
Accessories (optional)	O-ring: 1 x 24 x 2, FKM, FDA compliant, E30123	
	sealing ring: 1, PEEK, FDA compliant, E30124	
Remarks		
Pack quantity	1 pcs.	