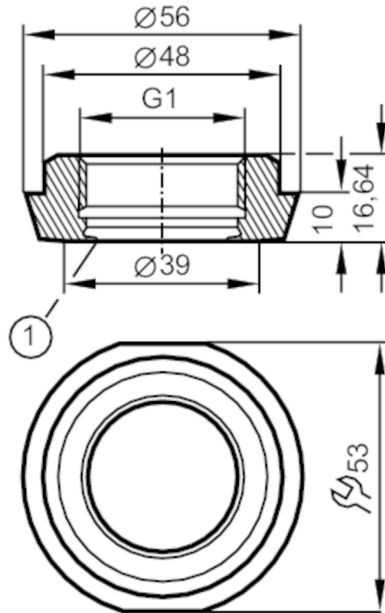




Process adapter sanitary pipe fitting

ADAPT IFM-DIN11851 DN40/1.5"



1 Sealing edge

EC 1935/2004 FCM 

Application		
Pressure rating	[bar]	40
Tests / approvals		
Pressure equipment directive	A possible classification to PED depends on the application and has to be carried out by the user / operator.	
Safety instructions	The compatibility between medium and product material has to be checked in all applications.	
Mechanical data		
Weight	[g]	199
Materials (wetted parts)	stainless steel (1.4435 / 316L) ; surface characteristics : Ra<0,4 / Rz 4	
Sensor connection	G 1 Internal thread Aseptoflex Vario	
Process connection	Hygienic pipe fitting DN40 (1,5") DIN 11851	
Sealing	metal to metal	
Hygienic equipment class to DIN 11866	H4	
Remarks		
Pack quantity	1 pcs.	