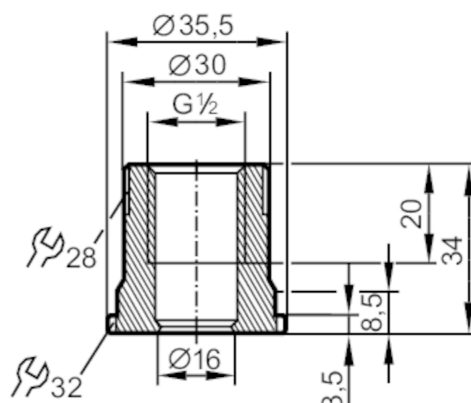


E33430



Process adapter for SMS pipe fitting

ADAPT G1/2-SMS DN25



EC 1935/2004 EHEDG Tested **FCM** **FDA**

Application		
Pressure rating	[bar]	40
Tests / approvals		
Pressure equipment directive	A possible classification to PED depends on the application and has to be carried out by the user / operator. The compatibility between medium and product material has to be checked in all applications.	
Safety instructions		
Mechanical data		
Weight	[g]	175
Material	stainless steel (1.4435 / 316L)	
Sensor connection	G 1/2 sealing cone	
Process connection	SMS pipe fitting DN25	
Surface characteristics Ra/Rz of the wetted parts	0.4 / 4	
Remarks		
Pack quantity	1 pcs.	