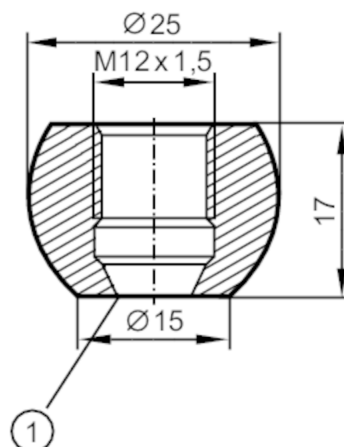




Welding adapter for process sensors

ADAPT M12-WELDING BALL ACCESSORY



1 Sealing edge

EC 1935/2004 

Application

| | | |
|--------------------|-------|-------|
| Medium temperature | [°C] | < 250 |
| Pressure rating | [bar] | 50 |

Tests / approvals

| | |
|------------------------------|---|
| Pressure equipment directive | A possible classification to PED depends on the application and has to be carried out by the user / operator. |
| Safety instructions | The compatibility between medium and product material has to be checked in all applications. |

Mechanical data

| | | |
|--------------------|------|---------------------------------|
| Weight | [g] | 45.1 |
| Material | | stainless steel (1.4404 / 316L) |
| Tightening torque | [Nm] | 5...20 |
| Sensor connection | | M12 x 1,5 sealing cone |
| Process connection | | Welding adapter Ø 25 mm |

Remarks

| | | |
|---------------|--|--------|
| Pack quantity | | 1 pcs. |
|---------------|--|--------|