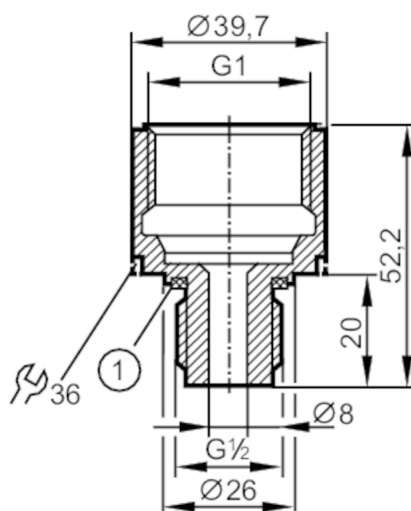


E30116



Screw-in adapter for process sensors

ADAPT G1-I / G1/2-A



1 sealings

Application

Pressure rating [bar] 100

Tests / approvals

Pressure equipment directive A possible classification to PED depends on the application and has to be carried out by the user / operator.

Safety instructions The compatibility between medium and product material has to be checked in all applications.

Mechanical data

Weight [g] 187

Material stainless steel (1.4404 / 316L); sealing: FKM

Sensor connection G 1

Process connection threaded connection G 1/2

Remarks

Pack quantity 1 pcs.