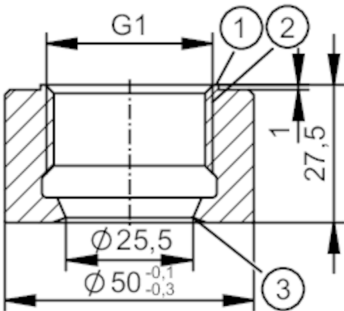


# E30060



## Welding adapter for process sensors

WELDING ADAPT G1 ST52-3



- 1 sealing area
- 2 G1 Internal thread
- 3 Sealing edge

Application		
Pressure rating	[bar]	50
Note on pressure rating	for the connection sensor - adapter	
Tests / approvals		
Pressure equipment directive	A possible classification to PED depends on the application and has to be carried out by the user / operator.	
Safety instructions	The compatibility between medium and product material has to be checked in all applications.	
Mechanical data		
Weight	[g]	295.5
Materials (wetted parts)	steel (1.0570 / S355J2) surface characteristics : Ra<0,4 / Rz 4	
Sensor connection	G 1 sealing cone	
Process connection	Welding adapter Ø 50 mm	
Remarks		
Pack quantity	1 pcs.	