



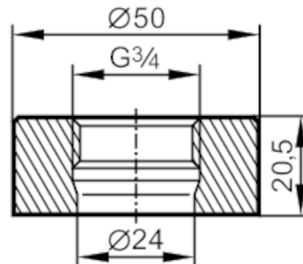
Welding adapter for process sensors

WELDING ADAPT G3/4

Article no longer available - archive entry

Alternative articles: E30130 + PM17xx or PI17xx

When selecting an alternative article and accessories please note that technical data may differ!



Application

| | | |
|-------------------------|-------|-------------------------------------|
| Pressure rating | [bar] | 25 |
| Note on pressure rating | | for the connection sensor - adapter |

Tests / approvals

| | |
|------------------------------|---|
| Pressure equipment directive | A possible classification to PED depends on the application and has to be carried out by the user / operator. |
| Safety instructions | The compatibility between medium and product material has to be checked in all applications. |

Mechanical data

| | | |
|--------------------------|-----|---|
| Weight | [g] | 290.5 |
| Materials (wetted parts) | | stainless steel (1.4404 / 316L) ; surface characteristics : Ra<0,4 / Rz 4 |
| Sensor connection | | threaded connection G 3/4 Internal thread |
| Process connection | | Welding adapter Ø 50 mm |

Remarks

| | | |
|---------------|--|--------|
| Pack quantity | | 1 pcs. |
|---------------|--|--------|