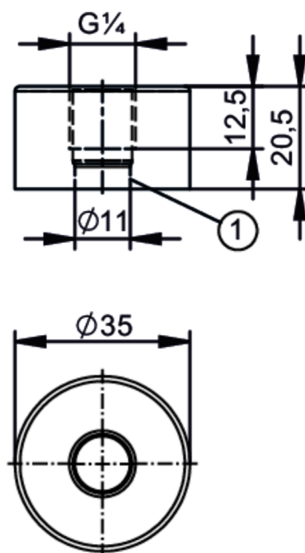




## Welding adapter for process sensors

WELDING ADAPT G1/4



1 sealing area

## Application

Pressure rating	[bar]	480
Note on pressure rating	for the connection sensor - adapter	

## Tests / approvals

Pressure equipment directive	A possible classification to PED depends on the application and has to be carried out by the user / operator.	
Safety instructions	The compatibility between medium and product material has to be checked in all applications.	

## Mechanical data

Weight	[g]	195.8
Material	stainless steel (1.4404 / 316L)	
Sensor connection	G 1/4	
Process connection	Welding adapter Ø 35 mm	
Sealing	Gasket	

## Remarks

Pack quantity	1 pcs.
---------------	--------