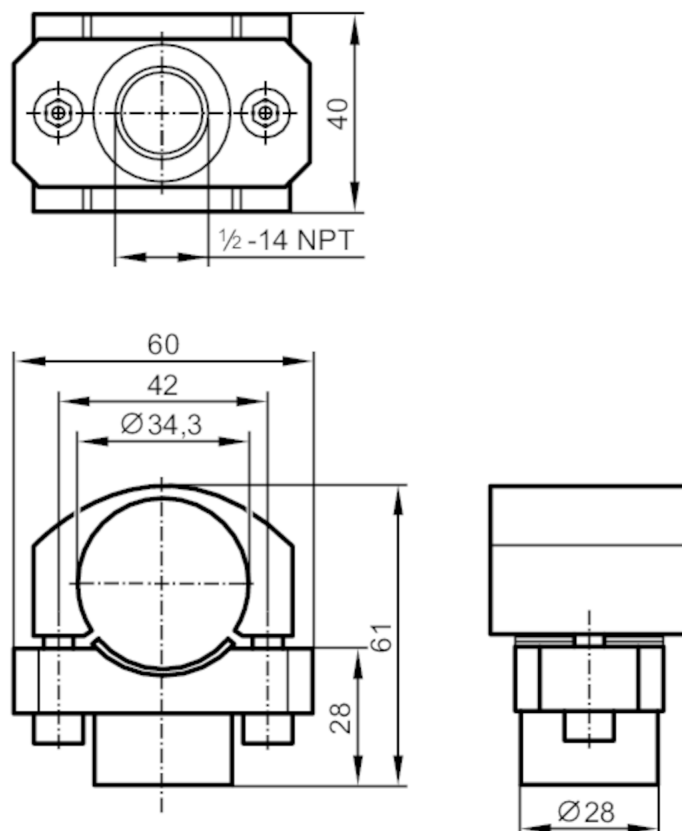


## Conduit adapter mounting set for connectors

CONDUIT ADAPTER 1/2 NPT



1 sealing

## Application

Design for pressure sensors with lateral connector, for protective tube with coupling, 1/2 - 14 NPT

## Mechanical data

Weight	[g]	393.5
Material	Clamp: stainless steel (1.4305 / 303); Clamp: stainless steel (1.4404 / 316L); sealing: FKM	
Tightening torque	[Nm]	5; (see operating instructions)

## Remarks

Pack quantity	1 pcs.
---------------	--------