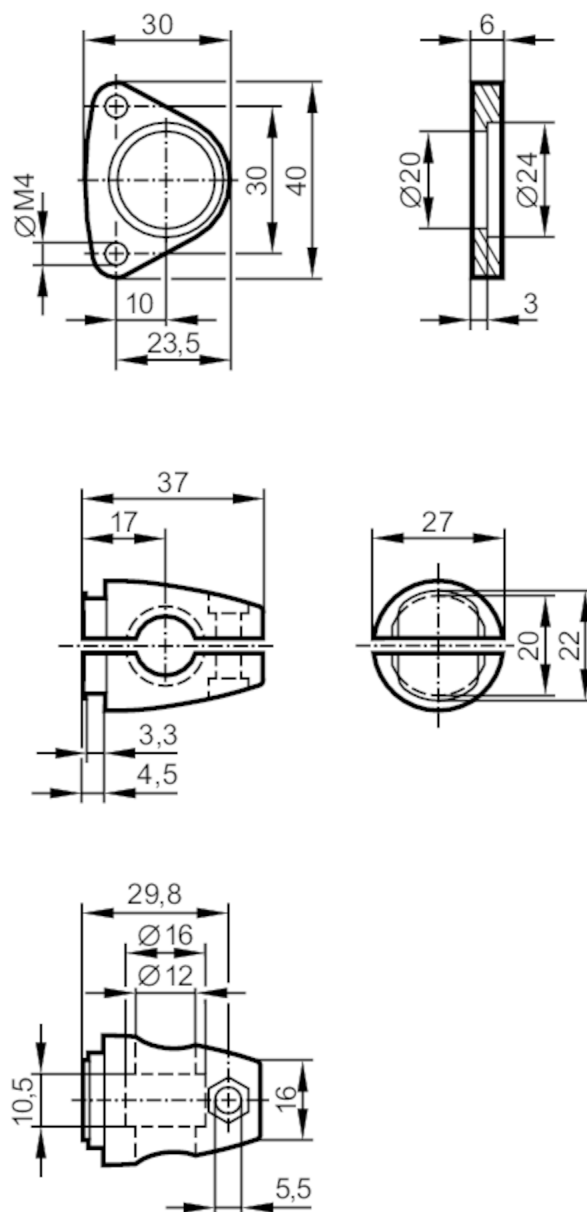




Mounting set for laser distance sensors

MOUNTING SET Ø1D 12MM



Application

Design

Clamp mounting

Mechanical data

Weight

[g]

118.5

Type of mounting

Mounting rod; (Ø 12 mm)

Material

fixture: stainless steel (1.4301 / 304); Clamp: stainless steel (1.4408); screws: stainless steel; Nut: stainless steel

Accessories

Items supplied

socket head screws: 2 x M4 x 45

Remarks

Pack quantity

1 pcs.