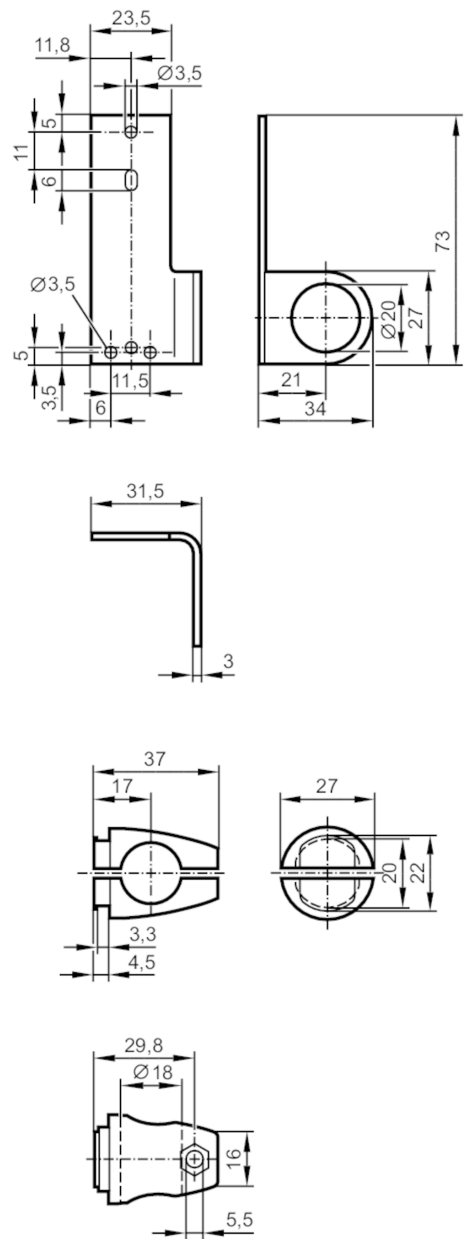


E21241



Mounting set for reflectors

SYSTEM COMPONENT REFL BOLT



Application	
Design	Clamp mounting, for reflector, 72,5 x 19 mm
Mechanical data	
Weight [g]	121.5
Type of mounting	Mounting rod; (Ø 18 mm)
Material	fixture: stainless steel (1.4571/316Ti ); Clamp: diecast zinc
Remarks	
Pack quantity	1 pcs.