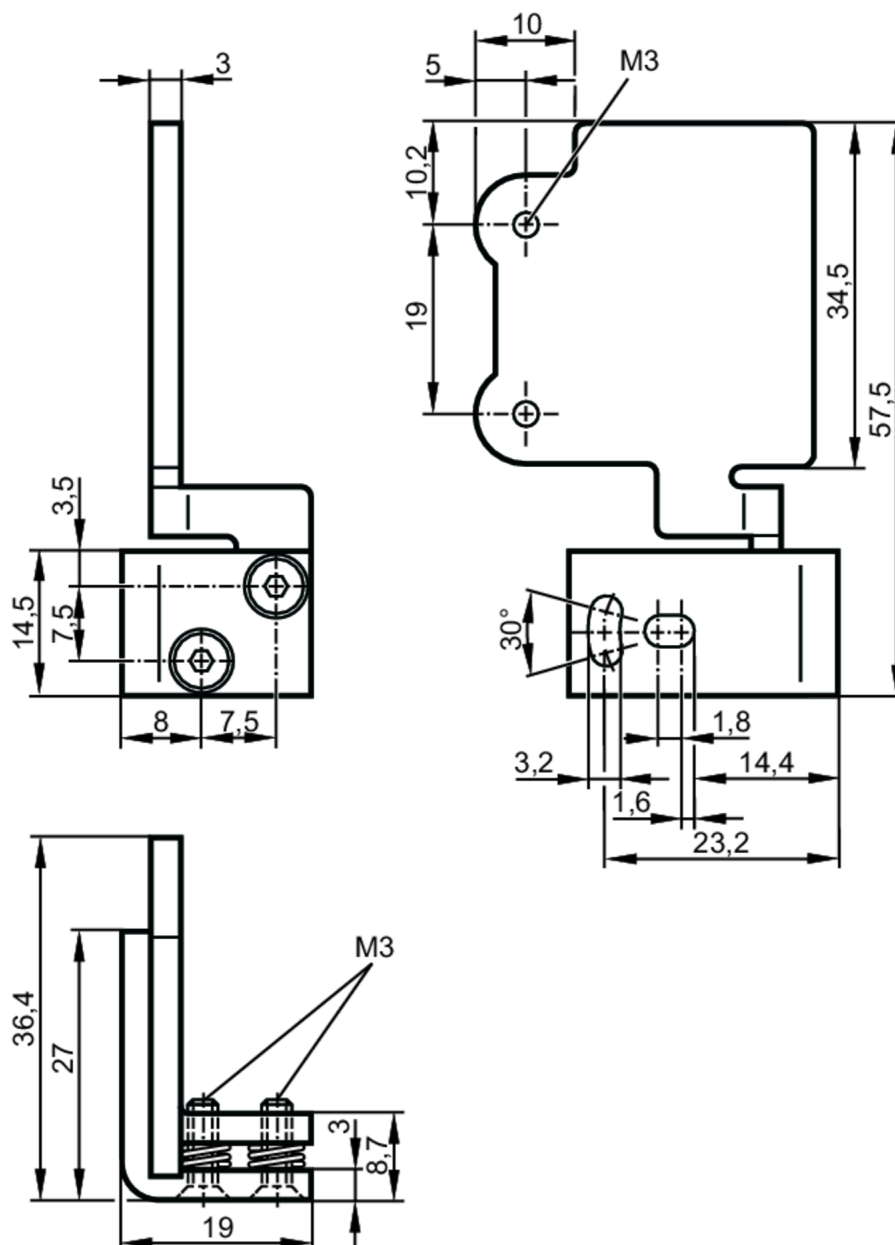


E21226



Fixture for mounting and fine adjustment of laser sensors

SYSTEM COMPONENT OJ LASER



Application

Design for side lens

Mechanical data

Weight	[g]	62.5
Dimensions	[mm]	57.5 x 36.4 x 19
Material		stainless steel (1.4301 / 304)
Alignment range		fine adjustment in 2 axes $\pm 2^\circ$

Remarks

Pack quantity 1 pcs.