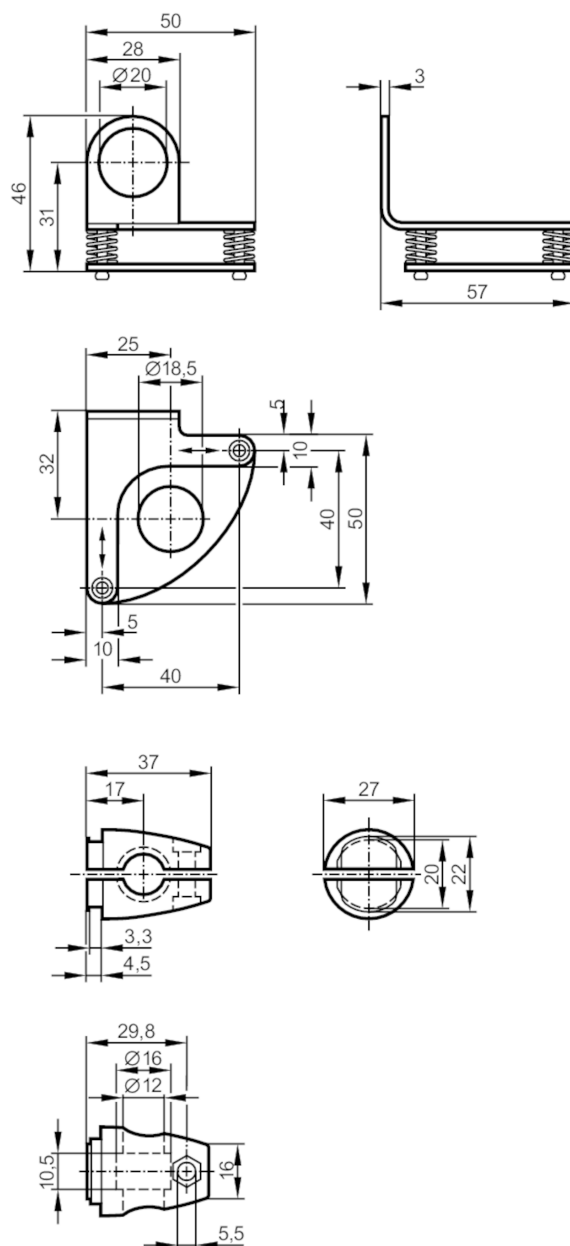


E21220



Fixture for mounting and fine adjustment of laser sensors

M18 FINE ADJUSTMENT 500



Application	
Design	Clamp mounting
Mechanical data	
Weight [g]	177
Type of mounting	Mounting rod; (Ø 12 mm)
Dimensions [mm]	Ø 18.5
Material	fixture: stainless steel (1.4571/316Ti); Clamp: stainless steel
Alignment range	fine adjustment in 2 axes ± 3°
Remarks	
Pack quantity	1 pcs.