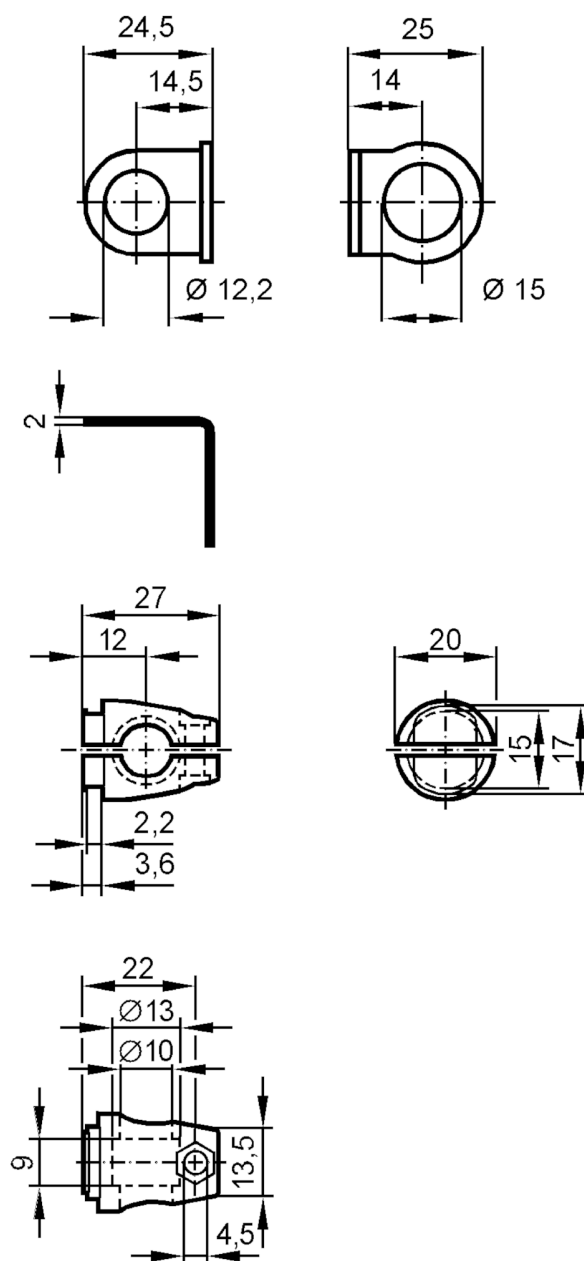


E21201



Mounting set for position sensors

M12 ANGLE BRACKET 500



Application

Design

Clamp mounting

Mechanical data

Weight [g]

50.5

Type of mounting

Mounting rod; (Ø 10 mm)

Dimensions [mm]

Ø 12.2

Material

fixture: stainless steel (1.4571/316Ti); Clamp: stainless steel (1.4408)

Remarks

Pack quantity

1 pcs.