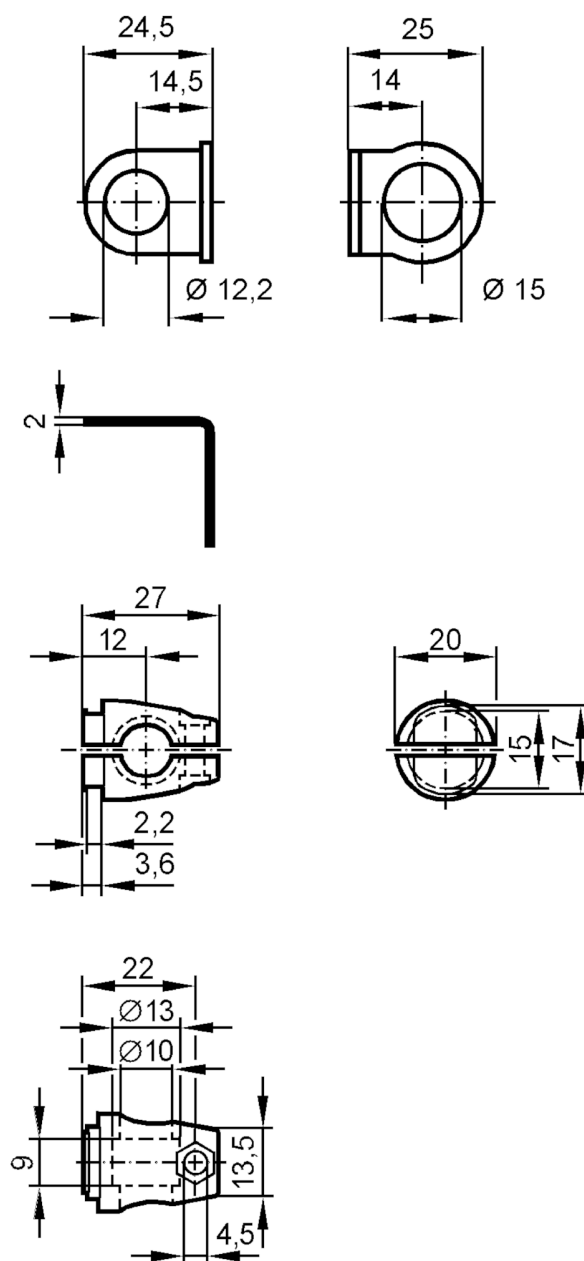


# E21200



## Mounting set for position sensors

M12 ANGLE BRACKET 200



### Application

Design

Clamp mounting

### Mechanical data

Weight [g]

46.5

Type of mounting

Mounting rod; (Ø 10 mm)

Dimensions [mm]

Ø 12.2

Material

fixture: stainless steel (1.4571/316Ti ); Clamp: diecast zinc

### Remarks

Pack quantity

1 pcs.